



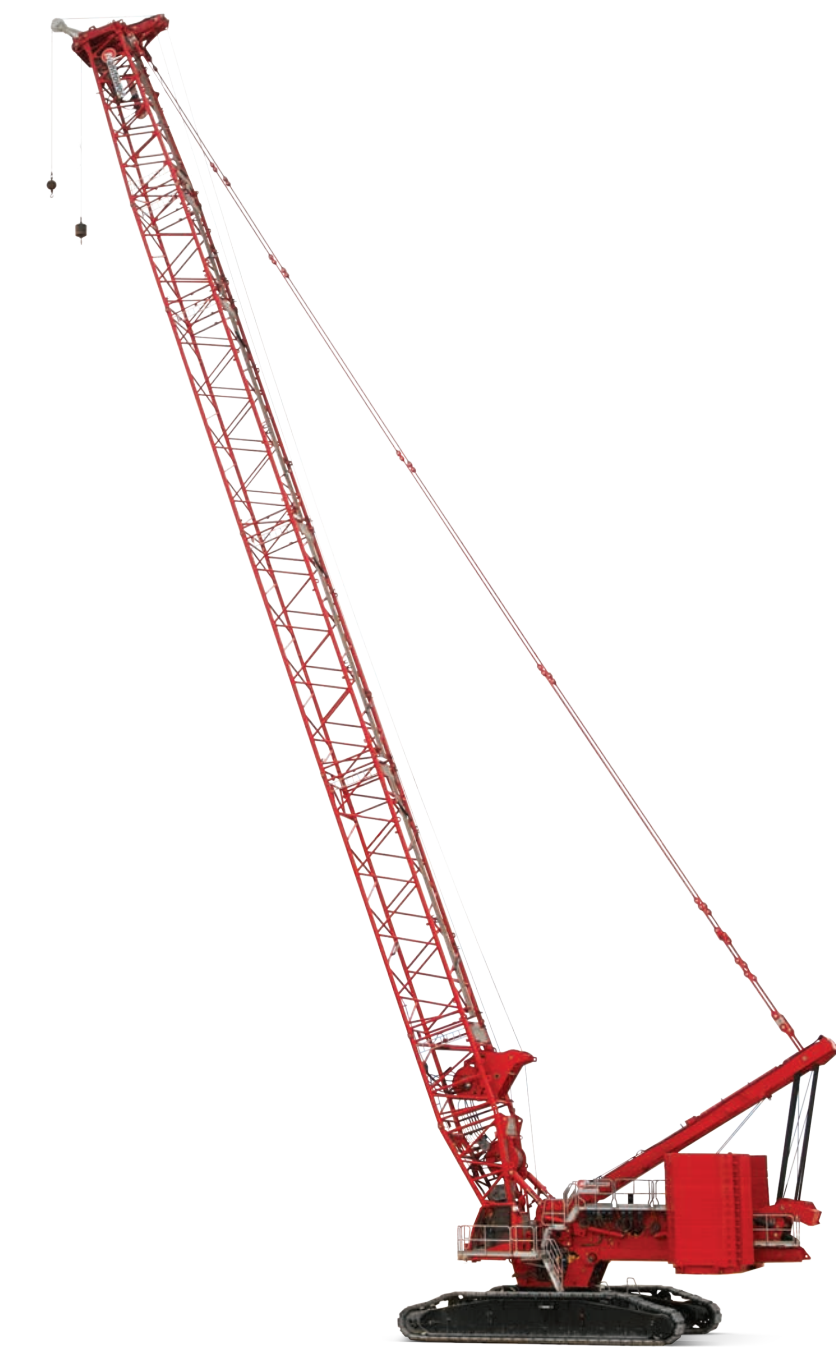
Manitowoc

GROVE

POTAIN

NATIONAL CRANE

SHUTTLELIFT



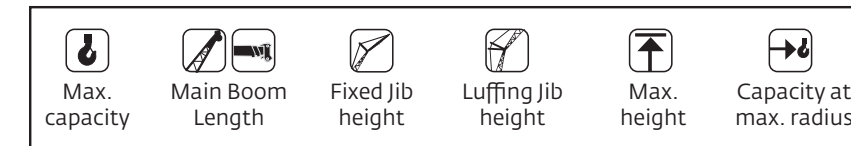
Manitowoc - Lattice-boom Crawlers

Metric				
<b>MLC80A-1</b>	72,6 t	18,3 m	--	62 m
<b>MLC90A-1</b>	81,6 t	18,3 m	--	62 m
<b>MLC100A-1</b>	90,7 t	18,3 m	--	62 m
<b>MLC100-1</b>	100 t	18,3 m	--	62 m
<b>MLC150-1</b>	150 t	24,3 m	51,8 m	76 m
<b>MLC165-1</b>	165 t	24,4 m	51,8 m	83,8 m
<b>14000</b>	200 t	24,4 m	51,8 m	89 m
<b>MLC250</b>	250 t	24,4 m	73,2 m	88,4 m
<b>MLC300*</b>	300 t	42 m	96 m	90 m
<b>MLC300*</b>	300 t	42 m	96 m	120 m
<b>MLC300</b>	350 t	42 m	96 m	101 m
<b>MLC650</b>	650 t	42 m	101 m	104 m
<b>MLC650*</b>	700 t	42 m	101 m	146 m
<b>31000</b>	2 300 t	42 m	114 m	110 m

\* with Fixed Position Counterweight with VPC-MAX® attachment

Imperial				
<b>MLC80A-1</b>	80 USt	60 ft	--	200 ft
<b>MLC90A-1</b>	90 USt	60 ft	--	200 ft
<b>MLC100A-1</b>	100 USt	60 ft	--	200 ft
<b>MLC100-1</b>	110 USt	60 ft	--	200 ft
<b>MLC150-1</b>	165 USt	80 ft	170 ft	256 ft
<b>MLC165-1</b>	182 USt	80 ft	170 ft	275 ft
<b>14000</b>	220 USt	80 ft	170 ft	292 ft
<b>MLC250</b>	275 USt	80 ft	240 ft	290 ft
<b>MLC300*</b>	330 USt	137,8 ft	315 ft	295,3 ft
<b>MLC300*</b>	330 USt	137,8 ft	315 ft	393,7 ft
<b>MLC300</b>	386 USt	137,8 ft	315 ft	334,6 ft
<b>MLC650</b>	717 USt	137,8 ft	331,4 ft	341,2 ft
<b>MLC650*</b>	772 USt	137,8 ft	334,6 ft	479 ft
<b>31000</b>	2.535 USt	137,8 ft	374 ft	361 ft

\* with Fixed Position Counterweight \* with VPC-MAX® attachment



www.manitowoc.com



Grove - All-Terrain

Metric			
<b>GMK3050-3</b>	50 t	40 m	50 m
<b>GMK3060-2</b>	60 t	40 m	58 m
<b>GMK3060L-1</b>	60 t	48 m	65 m
<b>GMK4070L</b>	70 t	60 m	77 m
<b>GMK4080-3</b>	80 t	51 m	75 m
<b>GMK4090-1</b>	90 t	51 m	75 m
<b>GMK4100L-2</b>	100 t	60 m	89 m
<b>GMK5120L</b>	120 t	66 m	93 m
<b>GMK5150-1</b>	150 t	51 m	88 m
<b>GMK5150L-1</b>	150 t	60 m	97 m
<b>GMK5150XL</b>	150 t	68,7 m	96 m
<b>GMK5180-1</b>	180 t	64 m	101 m
<b>GMK5200-1</b>	200 t	64 m	101 m
<b>GMK5250L-1</b>	250 t	70 m	110 m
<b>GMK5250XL-1</b>	250 t	78,5 m	110 m
<b>GMK6300L-1</b>	300 t	80 m	120 m
<b>GMK6400-1*</b>	400 t	60 m	137 m
<b>GMK7450*</b>	450 t	16-60 m	137 m

\* with MegaWingLift™

Imperial			
<b>GMK3050-3</b>	55 USt	131 ft	164 ft
<b>GMK3060-2</b>	65 USt	131 ft	190 ft
<b>GMK3060L-1</b>	65 USt	157 ft	216 ft
<b>GMK4070L</b>	75 USt	197 ft	253 ft
<b>GMK4080-3</b>	88 USt	167 ft	246 ft
<b>GMK4090-1</b>	100 USt	167 ft	246 ft
<b>GMK4100L-2</b>	115 USt	197 ft	292 ft
<b>GMK5120L</b>	130 USt	216,5 ft	305 ft
<b>GMK5150-1</b>	175 USt	167 ft	289 ft
<b>GMK5150L-1</b>	175 USt	197 ft	318 ft
<b>GMK5150XL</b>	175 USt	225 ft	315 ft
<b>GMK5180-1</b>	210 USt	210 ft	331 ft
<b>GMK5200-1</b>	240 USt	210 ft	331 ft
<b>GMK5250L-1</b>	300 USt	230 ft	361 ft
<b>GMK5250XL-1</b>	300 USt	257,5 ft	361 ft
<b>GMK6300L-1</b>	350 USt	263 ft	393 ft
<b>GMK6400-1*</b>	450 USt	197 ft	449 ft
<b>GMK7550*</b>	550 USt	53-197 ft	449 ft

\* with MegaWingLift™



Grove - Truck Mounted

Metric			
<b>TMS500-2</b>	36,3 t	31 m	42 m
<b>TMS500-2</b>	36,3 t	29 m	39,1 m
<b>TMS800-2</b>	70 t	39 m	41,8 m
<b>TMS875-2</b>	75 t	39 m	41,8 m
<b>TMS9000-2</b>	100 t	51,6 m	79,3 m
<b>TTS9000-2</b>	100 t	51,6 m	79,3 m
Imperial			
<b>TMS500-2</b>	40 USt	102 ft	134,8 ft
<b>TMS500-2</b>	40 USt	95 ft	128,2 ft
<b>TMS800-2</b>	80 USt	128 ft	137 ft
<b>TMS875-2</b>	75 USt	128 ft	137 ft
<b>TMS9000-2</b>	115 USt	169 ft	263,4 ft
<b>TTS9000-2</b>	115 USt	169 ft	263,4 ft



Grove - Rough-Terrain

Metric			
<b>RT530E-2</b>	30 t	29 m	45,0 m
<b>RT540E</b>	35 t	31 m	47,0 m
<b>RT550E</b>	45 t	39 m	49,0 m
<b>GRT655</b>	51 t	34,8 m	51,8 m
<b>GRT655L</b>	51 t	43 m	59,7 m
<b>RT765E-2</b>	60 t	33,5 m	65,2 m
<b>RT770E</b>	65 t	42 m	67,4 m
<b>GRT880</b>	80 t	41,1 m	68,0 m
<b>GRT8100-1</b>	100 t	47 m	72,9 m
<b>GRT8120</b>	120 t	60 m	80,8 m
<b>RT9130E-2</b>	120 t	48,7 m	85,0 m
<b>GRT9165</b>	150 t	62,5 m	91,2 m
Imperial			
<b>RT530E-2</b>	30 USt	95 ft	146 ft
<b>RT540E</b>	40 USt	102 ft	154 ft
<b>GRT655</b>	55 USt	114,3 ft	170 ft
<b>GRT655L</b>	55 USt	141,2 ft	196 ft
<b>RT765E-2</b>	65 USt	110 ft	214 ft
<b>RT770E</b>	70 USt	138 ft	221 ft
<b>GRT880</b>	80 USt	134,7 ft	223,3 ft
<b>GRT8100-1</b>	100 USt	154,3 ft	239,4 ft
<b>GRT8120</b>	120 USt	197 ft	265 ft
<b>RT9130E-2</b>	130 USt	160 ft	279 ft
<b>GRT9165</b>	165 USt	205 ft	299 ft



Grove - Telescoping Crawler

Metric			
<b>GHC30</b>	30 t	25,2 m	40,2 m
<b>GHC50</b>	45 t	30,4 m	45,4 m
<b>GHC55</b>	50 t	30,4 m	45,4 m
<b>GHC75</b>	70 t	36 m	52,7 m
<b>GHC85</b>	80 t	42 m	60,7 m
<b>GHC110</b>	100 t	46,8 m	65,0 m
<b>GHC130</b>	120 t	40,2 m	70,0 m
<b>GHC140</b>	127 t	52,1 m	70,0 m
Imperial			
<b>GHC30</b>	30 USt	83 ft	132 ft
<b>GHC50</b>	50 USt	99,9 ft	149 ft
<b>GHC55</b>	55 USt	99,9 ft	149 ft
<b>GHC75</b>	75 USt	118,1 ft	173 ft
<b>GHC85</b>	85 USt	137,8 ft	199 ft
<b>GHC110</b>	110 USt	153,4 ft	212 ft
<b>GHC130</b>	132 USt	131,1 ft	229,8 ft
<b>GHC140</b>	140 USt	171 ft	229,8 ft



National Crane Boom Truck - Swing Seat

Metric			
<b>1300A</b>	27,2 t	33,5 m	49,7 m
<b>1400A</b>	29,9 t	38,7 m	52,4 m
<b>NBT40-2</b>	36,3 t	38,7 - 43,3 m	62,2 m
<b>NBT45-2</b>	40,8 t	38,7 - 43,3 m	62,2 m
<b>NBT50</b>	45,4 t	39 m	54,6 m
<b>NBT55</b>	49,9 t	39 m	54,6 m
<b>NTC55</b>	49,9 t	39 m	54,6 m
<b>NBT50L</b>	45,4 t	46 m	61,6 m
<b>NBT50L</b>	45,4 t	46 m	61,6 m
<b>NBT55L</b>	49,9 t	46 m	61,6 m
<b>NTC55L</b>	49,9 t	46 m	61,6 m
<b>NBT60</b>	54,4 t	39 m	54,6 m
<b>NBT60L</b>	54,4 t	46 m	61,6 m
<b>NTC60L</b>	54,4 t	46 m	61,6 m
<b>NBT60XL</b>	54,4 t	46 m	61,6 m
<b>NTC60XL</b>	54,4 t	46 m	61,6 m

Grove - Carrydeck

Metric			
<b>GCD09</b>	8,1 t	10,1 m	14,6 m
<b>GCD15</b>	13,6 t	15,4 m	21,2 m
<b>GCD20</b>	18,1 t	16,6 m	26,2 m
<b>GCD25</b>	22,7 t	21,6 m	29 m
Imperial			
<b>GCD09</b>	9,0 USt	33,2 ft	48 ft
<b>GCD15</b>	15,0 USt	50 ft	69,5 ft
<b>GCD20</b>	20,0 USt	54,5 ft	86 ft
<b>GCD25</b>	25,0 USt	71 ft	95 ft



Shuttlelift - Carrydeck

Metric			
<b>SCD09</b>	8,1 t	10,1 m	14,6 m
<b>SCD15</b>	13,6 t	15,4 m	21,2 m
<b>SCD20</b>	18,1 t	16,6 m	26,2 m
<b>SCD25</b>	22,7 t	21,6 m	29 m
Imperial			
<b>SCD09</b>	9,0 USt	33,2 ft	48 ft
<b>SCD15</b>	15,0 USt	50 ft	69,5 ft
<b>SCD20</b>	20,0 USt	54,5 ft	86 ft
<b>SCD25</b>	25,0 USt	71 ft	95 ft



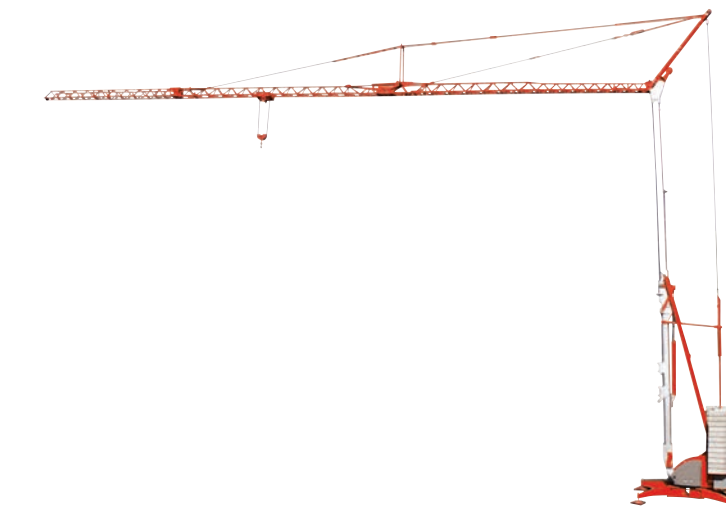
National Crane Boom Truck - Stand Up

Metric			
<b>400B</b>	9,1 t	17,1 m	20,1 m
<b>500E2</b>	16,3 t	21,6 m	36,9 m
<b>600E2</b>	18,1 t	27,4 m	44 m
<b>600H</b>	18,1 t	27,4 m	30,2 m
<b>800D</b>	20,9 t	30,5 m	46,3 m
<b>900A</b>	23,6 t	31,4 m	47,2 m
<b>NBT30H-2</b>	27,2 t	33,5 m	36,3 m
<b>1400H</b>	29,9 t	38,7 m	50,3 m
Imperial			
<b>400B</b>	10 USt	56 ft	66 ft
<b>500E2</b>	18 USt	71 ft	121 ft
<b>600E2</b>	20 USt	90 ft	144 ft
<b>600H</b>	20 USt	90 ft	99 ft
<b>800D</b>	23 USt	100 ft	152 ft
<b>900A</b>	26 USt	103 ft	155 ft
<b>NBT30H-2</b>	30 USt	110 ft	119 ft
<b>1400H</b>	33 USt	127 ft	165 ft



Potain - Hup

Metric			
<b>Hup 32-27</b>	4 t	27 m 21,3 m	32 m / 1 t
<b>Hup 40-30</b>	4 t	30 m 25,6 m	40 m / 1 t
Imperial			
<b>Hup 32-27</b>	4.4 USt	89 ft 70 ft	105 ft / 1.1 USt
<b>Hup 40-30</b>	4.4 USt	98 ft 84 ft	131 ft / 1.1 USt



Potain - Igo