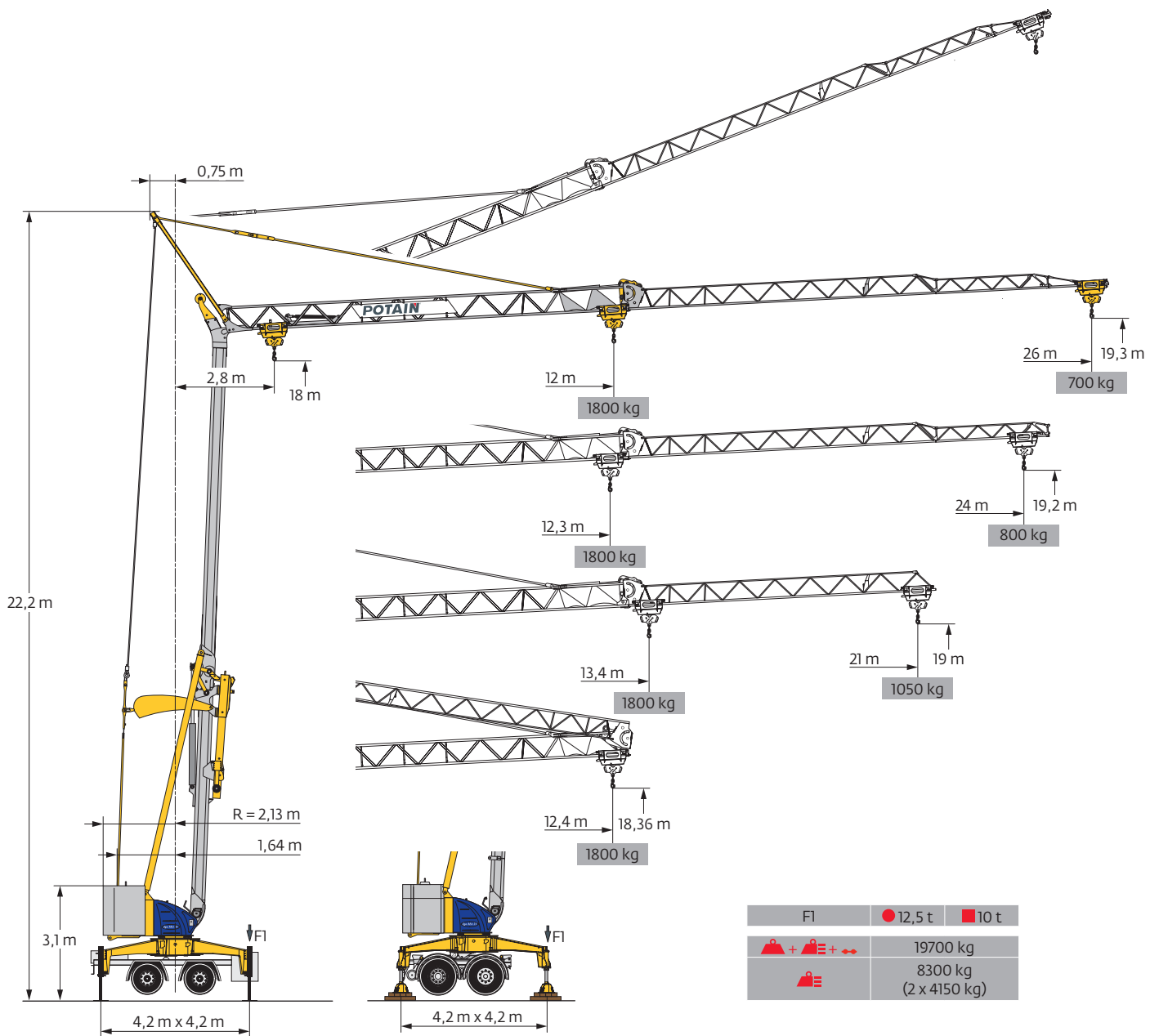
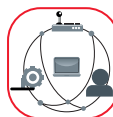


## Igo MA 21



SmartCom



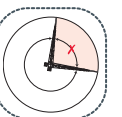
Hydraulic Levelling



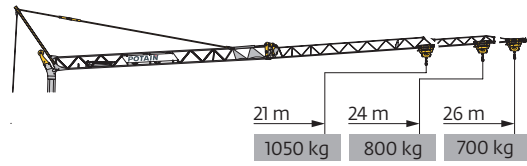
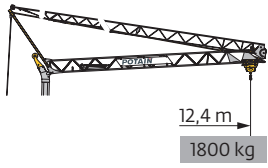
Generator



Top Zone

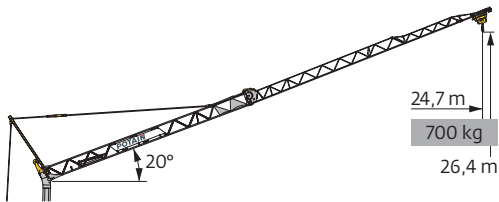


Courbes de charges / Lastkurven / Load curves / Curvas de cargas / Curve di carico  
 Curvas de carga / Кривые нагрузок

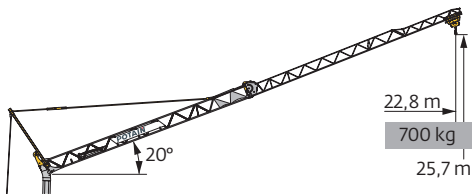


|      |     |   |      |    |
|------|-----|---|------|----|
| 26 m | 2,8 | ▶ | 12,4 | m  |
|      |     |   | 1800 | kg |
| 24 m | 2,8 | ▶ | 12,4 | m  |
|      |     |   | 1800 | kg |
| 21 m | 2,8 | ▶ | 12,4 | m  |
|      |     |   | 1800 | kg |

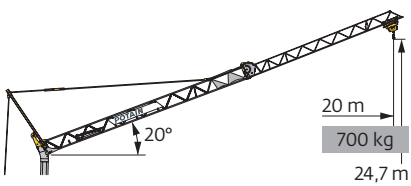
|     |   |      |      |      |      |      |      |      |      |      |      |     |     |     |     |     |    |
|-----|---|------|------|------|------|------|------|------|------|------|------|-----|-----|-----|-----|-----|----|
| 2,8 | ▶ | 12   | 13   | 14   | 15   | 16   | 17   | 18   | 19   | 20   | 21   | 22  | 23  | 24  | 25  | 26  | m  |
|     |   | 1800 | 1630 | 1490 | 1370 | 1265 | 1175 | 1095 | 1025 | 965  | 910  | 860 | 815 | 775 | 735 | 700 | kg |
| 2,8 | ▶ | 12,3 | 13   | 14   | 15   | 16   | 17   | 18   | 19   | 20   | 21   | 22  | 23  | 24  |     |     | m  |
|     |   | 1800 | 1685 | 1535 | 1415 | 1310 | 1215 | 1135 | 1060 | 1000 | 940  | 890 | 845 | 800 |     |     | kg |
| 2,8 | ▶ |      | 13,4 | 14   | 15   | 16   | 17   | 18   | 19   | 20   | 21   |     |     |     |     |     | m  |
|     |   |      | 1800 | 1710 | 1570 | 1455 | 1350 | 1265 | 1185 | 1115 | 1050 |     |     |     |     |     | kg |



|      |     |   |  |  |  |  |  |  |  |  |  |  |  |  |  |  |      |    |
|------|-----|---|--|--|--|--|--|--|--|--|--|--|--|--|--|--|------|----|
| 26 m | 2,8 | ▶ |  |  |  |  |  |  |  |  |  |  |  |  |  |  | 24,7 | m  |
|      |     |   |  |  |  |  |  |  |  |  |  |  |  |  |  |  | 700  | kg |





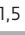
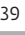



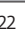









|      |     |   |  |  |  |  |  |  |  |  |  |  |  |  |  |  |  |      |    |
|------|-----|---|--|--|--|--|--|--|--|--|--|--|--|--|--|--|--|------|----|
| 24 m | 2,8 | ▶ |  |  |  |  |  |  |  |  |  |  |  |  |  |  |  | 22,8 | m  |
|      |     |   |  |  |  |  |  |  |  |  |  |  |  |  |  |  |  | 700  | kg |



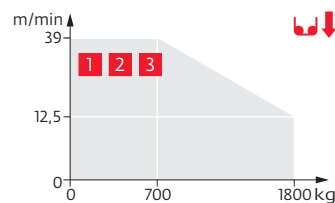
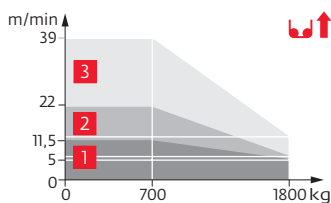
|      |     |   |  |  |  |  |  |  |  |  |  |  |  |  |  |  |  |     |    |
|------|-----|---|--|--|--|--|--|--|--|--|--|--|--|--|--|--|--|-----|----|
| 21 m | 2,8 | ▶ |  |  |  |  |  |  |  |  |  |  |  |  |  |  |  | 20  | m  |
|      |     |   |  |  |  |  |  |  |  |  |  |  |  |  |  |  |  | 700 | kg |

Mécanismes / Triebwerke / Mechanisms / Mecanismos / Meccanismi  
 Mecanismos / Механизмы

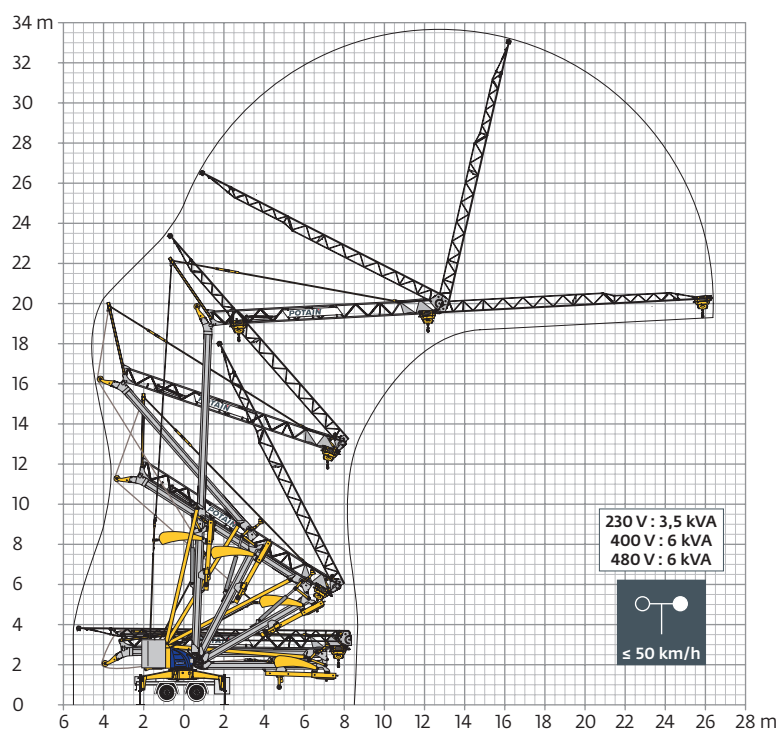
| 230 V - 50 Hz<br>400 V - 50 Hz<br>480 V - 60 Hz                                   |                       |                                |                        |  |      |      | ch - PS<br>hp | kW  |     |
|---|-----------------------|--------------------------------|------------------------|--|------|------|---------------|-----|-----|
|  | <b>8 LVF 9 Optima</b> | 230 V $\neq$<br>20 A <b>1</b>  | m/min                  |  3,5  5  12,5  11,5  39 | 1800 | 1800 | 700           | 3,3 | 2,4 |
|   |                       | kg                             |                        |  |      |      |               |     |     |
|   |                       | 230 V $\neq$<br>32 A <b>2</b>  | m/min                  |  3,5  6,5  12,5  22  39 | 1800 | 1800 | 700           | 5,2 | 3,8 |
|   |                       | kg                             |                        |  |      |      |               |     |     |
|   |                       | 400 V $\neq$<br>480 V <b>3</b> | m/min                  |  3,5  12,5  39  | 1800 | 1800 | 700           | 7,5 | 5,5 |
|   |                       | kg                             |                        |  |      |      |               |     |     |
|  | <b>1 DVF 4</b>        |                                | m/min                  | 14 → 36 (0 → 700 kg)<br>14 → 28 (700 → 1800 kg)  |      |      | 1,5           | 1,1 |     |
|  | <b>RVF 20</b>         |                                | tr/min<br>U/min<br>rpm | 0 → 1  |      |      | 1,5           | 1,1 |     |

|  <b>IEC 60204-32</b> |  <b>kVA</b> |
|---|--|
| 230 V (+10% -10%) 50 Hz<br>400 V (+10% -10%) 50 Hz<br>480 V (+6% -10%) 60Hz                           | 230 V 20 A : 4,6 kVA<br>230 V 32 A : 7,4 kVA<br>400 V / 480 V : 11 kVA                         |

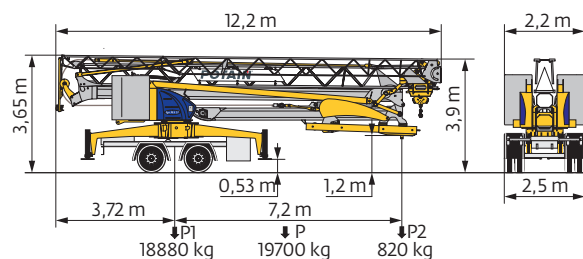
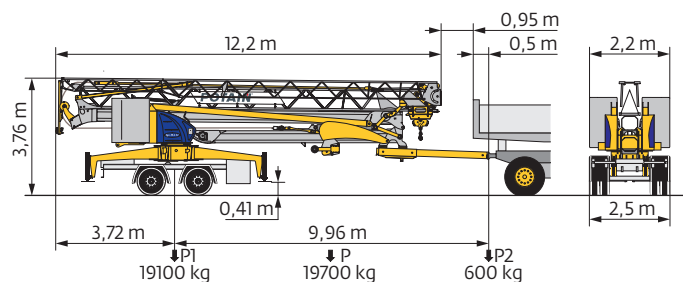
**8 LVF 9 Optima**



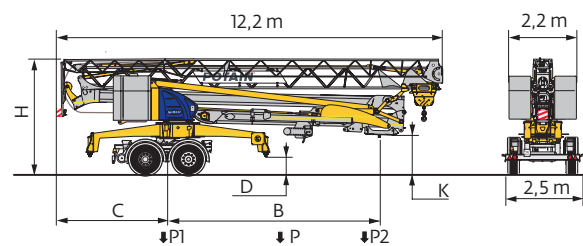
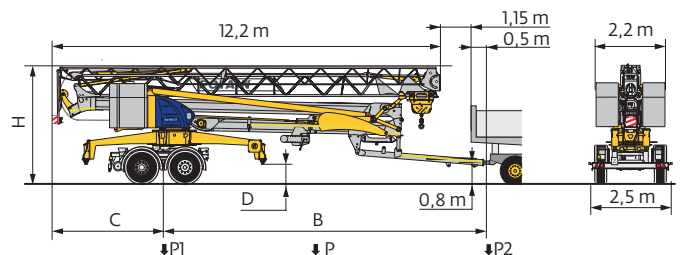
Montage / Montage / Erection / Montaje / Montaggio  
 Montagem / Монтаж



Transport / Transport / Transport / Transporte / Trasporto  
Transporte / Транспортировка



Igo MA 21 | **km/h** 80 | ABE / TÜV



|                     | km/h | B (m) | C (m) | D (m) | H (m) | K (m) | P (kg) | P1 (kg) | P2 (kg) |
|---------------------|------|-------|-------|-------|-------|-------|--------|---------|---------|
| T12/S215M           | 25   | 10,5  | 3,35  | 0,6   | 3,85  | -     | 19180  | 18380   | 800     |
| SL012/S215M         | 25   | 6,8   | 3,35  | 0,6   | 3,85  | 1,3   | 19180  | 18130   | 1050    |
| SL016/J215M (EBS) ⓘ | 80   | 6,7   | 3,5   | 0,53  | 3,76  | 1,2   | 19640  | 18100   | 1540    |

|     | FR   | DE  | EN  | ES   | IT   | PT  | RU   |
|-----|--|---|---|--|--|---|--|
| R   | Rayon de giration  | Schwenk radius  | Rear slewing radius   | Radio de giro  | Raggio di rotazione  | Raio de rotação   | Задний габарит   |
| •   | Nous consulter   | Auf Anfrage   | Consult us  | Consultarnos   | Consultateci   | Consultar-nos   | Проконсультируйтесь у нас  |
| •   | Réactions en service   | Reaktionskräfte in Betrieb  | Reactions in service  | Reacciones en servicio   | Reazioni in servizio   | Reacções em serviço   | Реакция при работе   |
| ■   | Réactions hors service   | Reaktionskräfte außer Betrieb   | Reactions out of service  | Reacciones fuera de servicio   | Reazioni fuori servizio  | Reacções fora de serviço  | Реакция в покое  |
| ▲   | Poids à vide, sans lest, sans trains de transport, avec flèche maxi, et hauteur standard | Gewicht ohne Last, ohne Ballast, ohne Transportachsen, mit max. Auslager und Standardhöhe | Weight without load, without ballast, without transport axes, with max. jib and standard height | Peso en vacío, sin lastre, sin trenes de transporte con flecha y altura estandar | Peso a vuoto, senza zavorra, senza assali di trasporto, con braccio max e altezza standard | Peso em vazio, sem lastro, sem eixos de transporte com lança máxima e altura standard | Вес без груза, без балласта, без осей для транспортировки, с максимальным вылетом стрелы и стандартной высотой |
| ≡   | Poids total du lest  | Ballast-Gesamtgewicht   | Total ballast weight  | Peso total del lastre  | Peso totale della zavorra  | Peso total do lastro  | Общий вес балласта   |
| ⚙   | Trains de transport  | Transportachsen   | Transport axes  | Trenes de transporte   | Assali di trasporto  | Eixos de transporte   | Оси для транспортировки  |
| □   | Équipements standards  | Standardausrüstungen  | Standard equipment  | Equipamiento de serie  | Equipaggiamento standard   | Equipamento de série  | Стандартное оборудование   |
| ⊞   | Équipements optionnels   | Sonderausrüstungen  | Options   | Equipamiento opcional  | Equipaggiamento in opzione   | Equipamento opcional  | Дополнительное оборудование (опция)  |
| ⬆   | Levage   | Heben   | Hoisting  | Elevación  | Sollevamento   | Elevação  | Подъем   |
| ⬆   | Distribution   | Katzfahren  | Trolleying  | Distribución   | Distribuzione  | Distribuição  | Перемещение по стреле  |
| ⬆   | Orientation  | Schwenken   | Slewing   | Orientación  | Rotazione  | Rotação   | Поворот  |
| ⚡   | 50 Hz Monophasé  | 50 Hz Einphasige  | 50 Hz Single phase  | 50 Hz Monofasica   | 50 Hz Monofase   | 50 Hz monofásica  | Однофазное напряжение 50Hz   |
| kVA | Puissance requise  | Erforderliche Leistung  | Required power  | Potencia Necesaria   | Potenza richiesta  | Potência Necessária   | Потребляемая мощность  |
| 🚚   | Transport grue toute lestée  | Krantransport mit voller Ballastierung  | Transport of crane with full ballast  | Transporte grúa completamente lastrada   | Trasporto con gru completamente zavorrata  | Transporte de grua totalmente balastrada  | Перевозка крана с полным балластом   |
| ⚠   | Hauteurs sous crochet données moufle plaquéée  | Hakenhöhen werden mit plattiertem Haken angegeben   | Hook heights given with plated pulley block   | Altura bajo gancho con pasteca bloqueada   | Altezza sotto gancio con bozzello in contatto con carrello                                 | Altura ao gancho com o cadernal em contacto com o carrinho                            | Высота под крюком дана при условии, что крюковая подвеска соприкасается с кареткой                             |
|     | Document commercial non contractuel  | Unverbindliches Vertriebsdokument   | This commercial document is not legally binding   | Documento comercial no contractual   | Documento commerciale non vincolante   | Documento comercial não contratual  | Этот коммерческий документ не является юридически обязательным   |
|     | Pour toute information technique se référer à la notice correspondante                   | Für technische Informationen, siehe die entsprechenden Anweisungen                        | For any technical information, please refer to the corresponding instructions                   | Para cualquier información técnica, ver la noticia correspondiente               | Per tutte le informazioni tecniche fare riferimento al catalogo istruzioni                 | Para qualquer informação técnica complementar consultar as respectivas instruções     | Для получения технической информации, см. соответствующие инструкции   |

