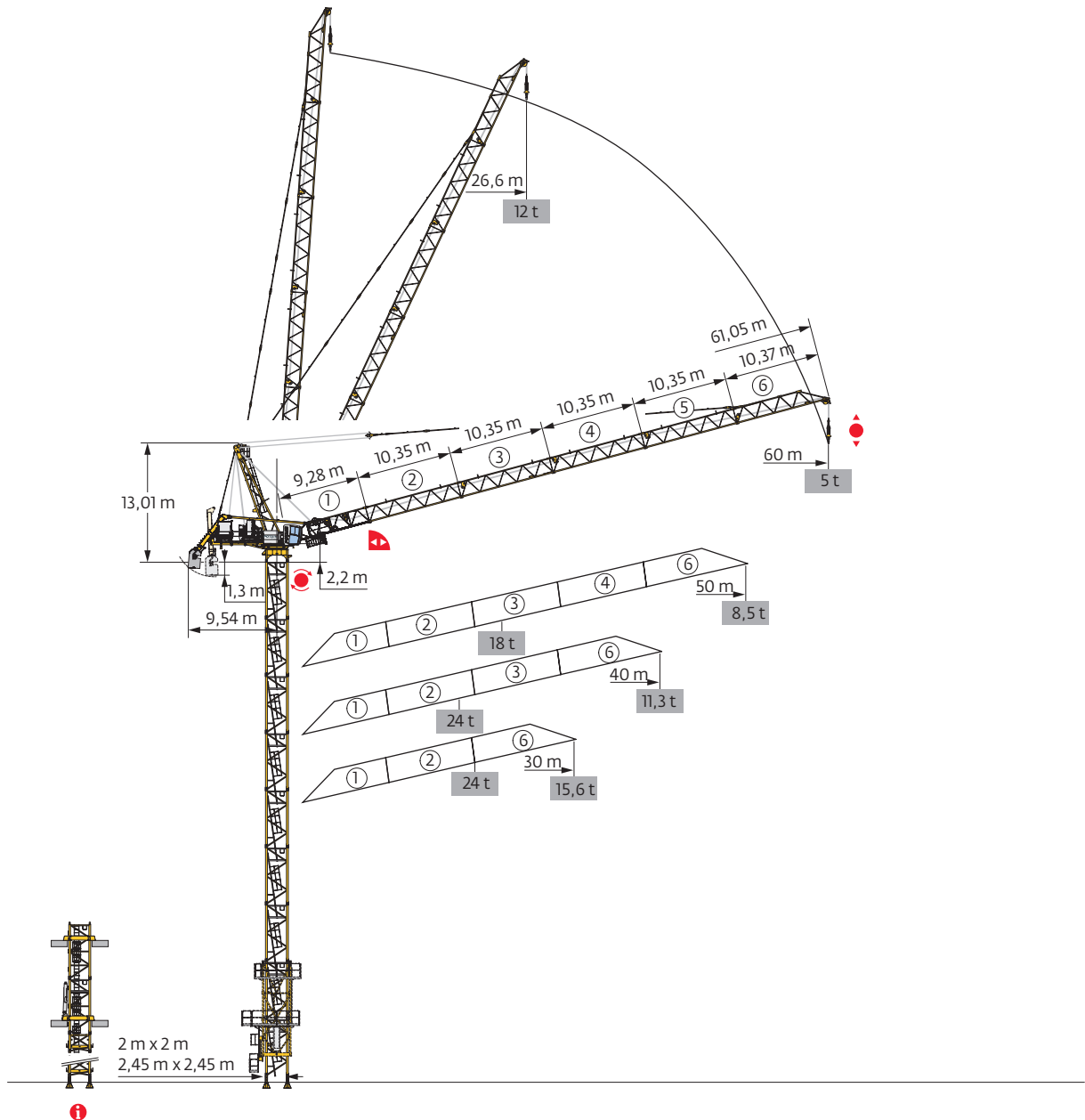
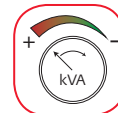


MR 418

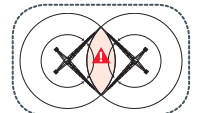
Hong Kong wind



Power Control



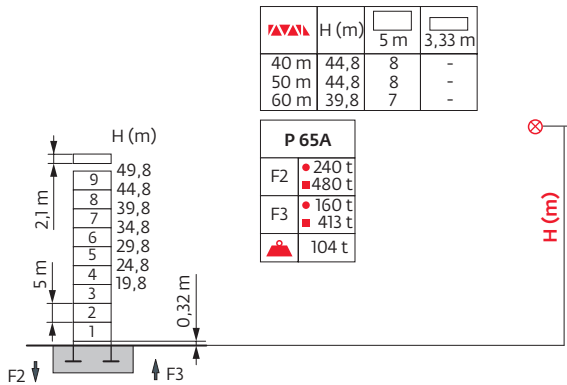
Anti-collision system



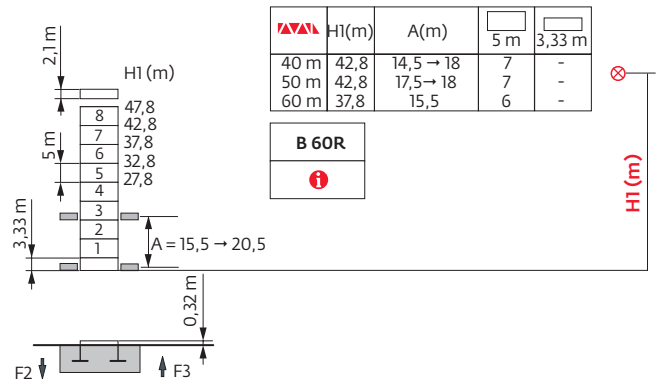
Mât - Réactions / Mast - Reaktionskräfte / Mast - Reactions / Mástil - Reacciones / Torre - Reazioni
 Tramo - Reações / Реакция опор мачты

2 m

30 m

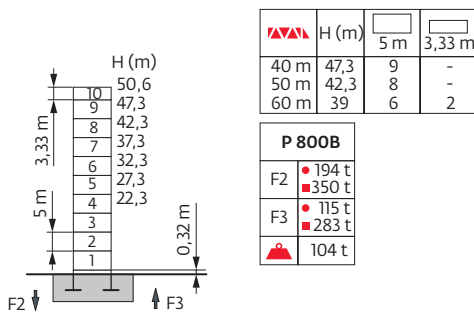


30 m

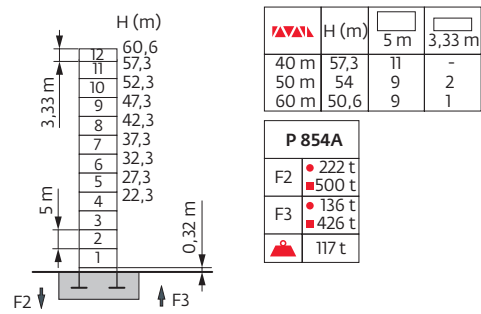


2,45 m

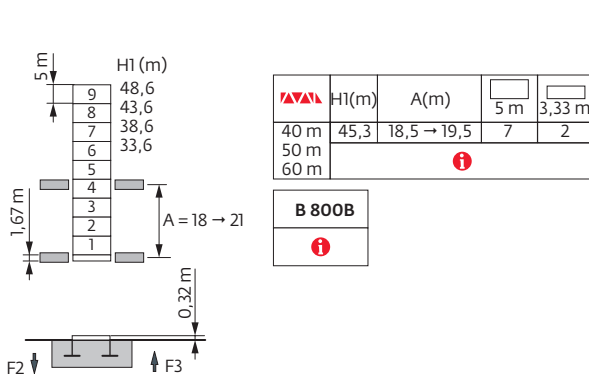
30 m



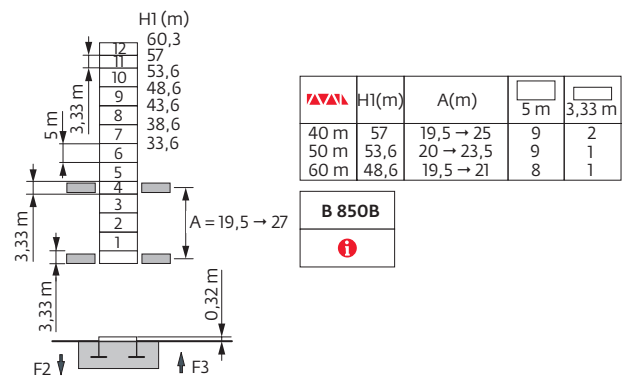
30 m



30 m



30 m

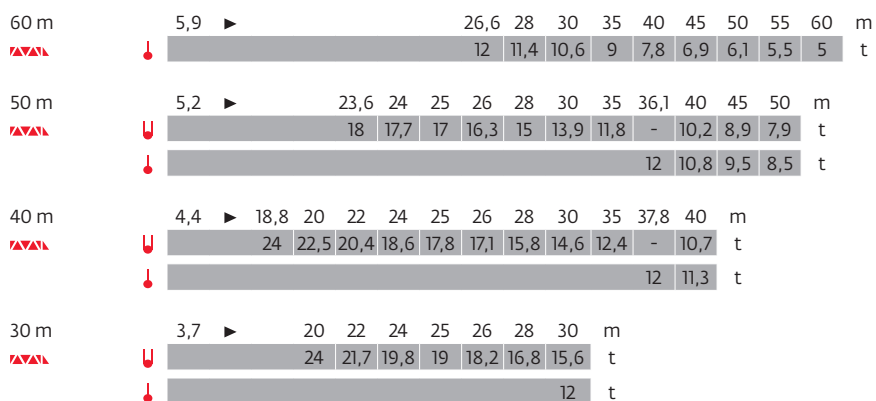


i Accès motorisés : compositions de mât, de lest de base et réactions adaptées. / Motorisierter Zugang vom : Mastzusammensetzung, Grundballast und Reaktionskräfte sind angepasst. / Motorized accesses: adapted mast composition, base ballast and reactions. / Acceso a cabina con elevador: Adaptación de composición de mástil, lastre de base y reacciones. / Accessi motorizzati: composizioni elementi torre, zavorre di base e reazioni aggiornate. / Acessos motorizados: composições de coluna, lastro da base e reações adaptadas. / Лифты : адаптированная композиция мачты, базовый балласт и нагрузки.





Ancrages / Verankerungen / Anchorages / Anclajes / Ancoraggi
 Ancoragem / Анкера



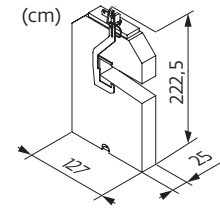
Courbes de charges / Lastkurven / Load curves / Curvas de cargas / Curve di carico
 Curvas de carga / Кривые нагрузок



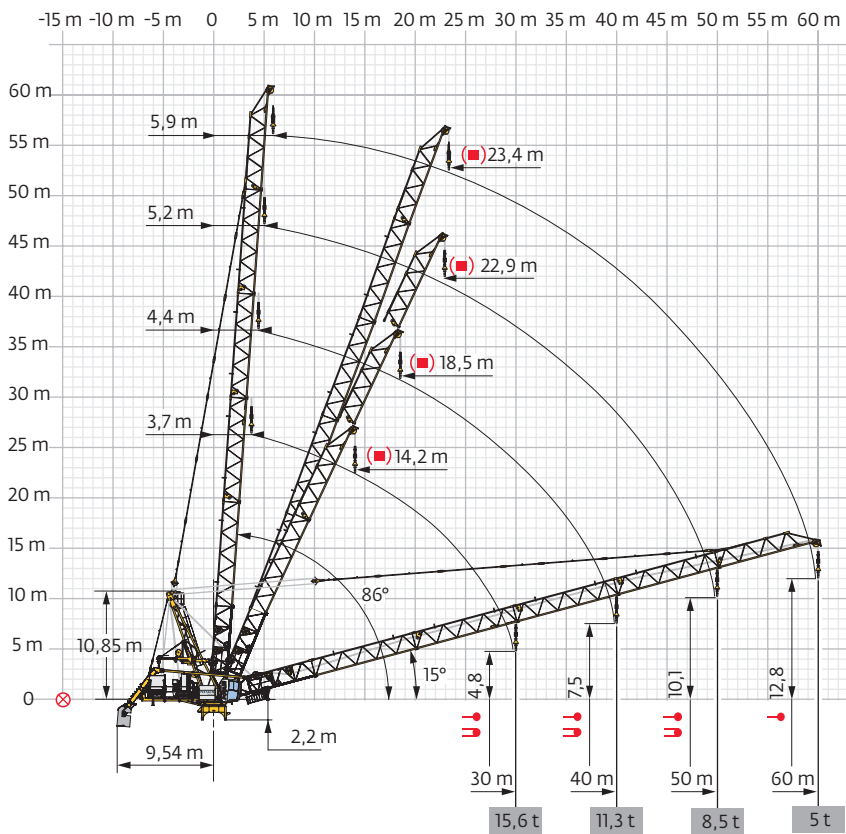
Poids de flèche & lest de contre-flèche / Auslegergewicht & Gegenauslegerballast / Jib weight & counter-jib ballast / Peso de flecha y lastre de contra-flecha / Peso del braccio & zavorra di contro-braccio / Peso da lança & lastro da contra lança
 Вес стрелы и балласт контр-стрелы

	 (kg) (+/- 5%)	 4400 kg	 (kg)
30 m	8290	7	30800
40 m	9615	8	35200
50 m	10915	9	39600
60 m	12050	9	39600

4400 kg



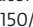


Flèche relevée / Ausleger in Steilstellung / Luffing jib / Flecha izada / Braccio impennato
 Lança inclinada / Маховая стрела



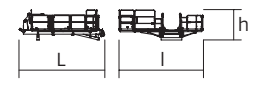
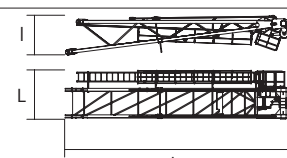
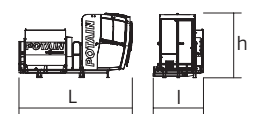
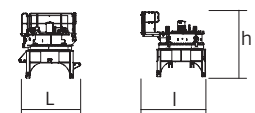
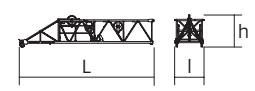
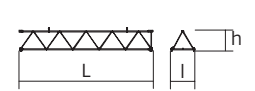
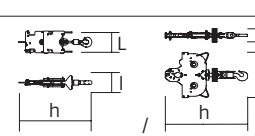
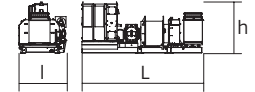
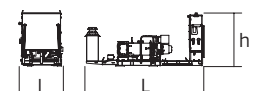
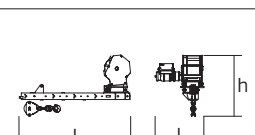
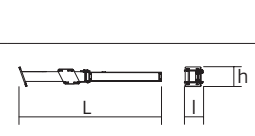
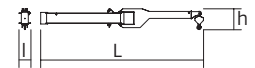
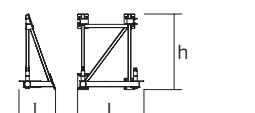
Encombremet et poids / Abmessungen und Gewicht / Dimensions and weight / Dimensiones y peso / Ingombro e peso
dimensões e pesos / габаритные размеры и вес

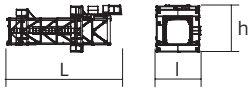
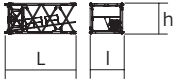
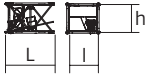


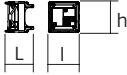
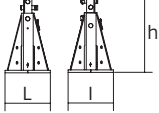
Partie tournante / Drehender Kranteil / Slewing crane part / Parte giratoria / Parte rotante / Parte rotativa

Parte rotante / Parte rotativa / Поворотная часть :  60 m -  -  150/180 HPL™







 x 11

 x 10







Partie tournante / Drehender Kranteil / Slewing crane part / Parte giratoria / Parte rotante / Parte rotativa Поворотная часть	L (m)	l (m)	h (m)	kg (+/- 5%)		
Contre-flèche (+ rambarde + plate-forme) Gegenausleger (+ Geländer + Plattform) Counter-jib (+ Grab rail + Platform) Contra-flecha (+ Guardacuerpos + Plataforma) Controbraccio (+ Parapetto + Piattaforma) / Contra-lança (+ Barreira + Plataforma) / Контр-стрела (+ Перила + Платформа)		6,43	6,35	2,1	4205	
Poinçon / Auslegerhaltebock Strut / Puntal Puntone / Extrator стойка		2,55	2,09	11,84	5550	
Cabine / Kabine Cab / Cabina Cabina / Cabina Кабина		Ultra View	4,42	1,99	2,49	1640
Pivot / Krankopf Towerhead / Pivote Portaralla / Pivot Секция поворотной части		□2,45 m	3,08	3,27	3,38	10470
Elément de flèche / Auslegerement Jib section / Elemento de flecha Elemento di braccio / Elemento de lança Секция стрелы		①	9,5	2,11	2,3	2660
Elément de flèche / Auslegerement Jib section / Elemento de flecha Elemento di braccio / Elemento de lança Секция стрелы		② ③ ④ ⑤ ⑥	10,53 10,53 10,53 10,53 10,47	1,9 1,9 1,9 1,9 1,9	1,78 1,78 1,78 1,78 2,42	1330 1295 1170 1045 2010
Moufle / Hubflasche Pulley block / Aparejo Bozzello / Cadernal Полиспаст		GH	0,88 1,56	0,55 0,45	2,55 2,51	1180 690
Treuil de levage (+ câble) / Hubwerk (+ Seil) Hoisting winch (+ rope) / Mecanismo de elevación (+ cabo) Argano di sollevamento (+ fune) Guincho de elevação (+ cabo) Подъемная лебедка (+ канатом)		150/180 HPL™ 270/320 LVF	4,92 5,61	2,28 2,17	1,93 2,37	10265 14090
Treuil de levage (+ câble) / Auslegerverstellwerk (+ Seil) Luffing winch (+ rope) / Mecanismo de izado (+ cabo) Argano di Impennaggio braccio (+ fune) Mecanismo de Inclinação da Lança (+ cabo) лебедка подъема стрелы (+ канатом)		150 VVF	4,88	1,72	2,17	4935
Bras de potence arrière gauche (+ treuil auxiliaire + moufle) Hinterer linker Hilfsgalgenarm + Hilfstriebwerk + Hubflasche Rear left derrick arm (+ auxiliary winch + pulley block)/Brazo de plumín trasero izquierdo + cabrestante auxiliar + aparejo Braccio della mensola posteriore sinistro + argano ausiliario + bozzello/Braço de potência traseiro esquerdo + guincho auxiliar + cadernal/Траверса кронштейна (задняя левая) + дополнительный подъемник + полиспаст			2,38	1,05	1,3	615
Bras de potence avant gauche/Vorderer linker Hilfsgalgenarm Front left derrick arm/Brazo de plumín delantero izquierdo/ Braccio della mensola anteriore sinistro/Braço de potência dianteiro esquerdo/Траверса кронштейна (передняя левая)			3,49	0,44	0,48	190
Bras articulé de potence/Gelenkiger Hilfsgalgenarm/Articulated derrick arm/Brazo de plumín articulado/Braccio articolato della mensola/Braço articulado de potência/ Подвижная траверса кронштейна			4,21	0,3	0,54	315
Support de potence / Hilfsgalgenträger / Derrick support Soporte de plumín / Supporto della mensola / Suporte de potência / Опора кронштейна			1,99	1,09	2,27	670

Рулоне / Kranturm / Crane tower Mástil / Torre / Torre Башня крана		L (m)	I (m)	h (m)	kg (+/- 5%)	
T 851		2,45 m	11,18	4,84	5,8	15750
KRM 650.10A KM 850.10B KM 850.14B K 850/KR 849A KRMT 849A K 849A KMT 850.10A KMT 850.14A		2 m 2,45 m 2,45 m 2,45 m 2,45 m 2,45 m 2,45 m 2,45 m	5,32 10,32 10,32 5,24 5,23 5,23 5,32 5,32	2,09 2,54 2,54 2,54 2,55 2,53 2,54 2,54	2,06 2,51 2,51 2,5 2,53 2,5 2,51 2,51	5480 10070 11190 5575 4090 3400 5450 5990
KRMT 849C		2,45 m	3,57	2,55	2,53	3205
KRM 650.10P KR 849P KRMT 850.10P		2 m 2,45 m 2,45 m	3,65 1,9 3,65	2,43 2,88 2,54	2,06 2,53 2,65	5500 2925 6265
KRM 650.11H K 8410H KM 8410H KRMT 850.12H		2 m 2,45 m 2,45 m 2,45 m	5,32 5,24 5,24 3,65	2,09 2,55 2,55 2,54	2,06 2,53 2,53 2,5	6400 5150 5190 5560
K 650/K 849 Mât raccord / Verbindungsmast Connecting mast / Tramo unión Elemento raccordo / Tramo raccordo Переходная мачта		2 / 2,45 m	2,33	2,51	2,5	4835
Pieds de scellement / VerankerungsfüÙe Fixing angles / Pie de empotramiento Montante da annegare / Angulos fixadores анкера		P 65A P 800B P 854A	0,9 0,75 0,9	0,9 0,75 0,9	1,49 1,28 1,5	835 465 940




















Mécanismes / Triebwerke / Mechanisms / Mecanismos / Meccanismi
 Mecanismos / Механизмы

400 V - 50 Hz													ch - PS hp	kW	
	150 HPL™ 120	m/min t	47 12	59,5 9	82 6	137 3	210 1,5	23,5 24	30 18	41,5 12	70 6	105 3,2	150	110	552 m
	270 LVF 120 Optima	m/min t	84 12	108 9	148 6	205 3,7	254 1,7	42 24	54 18	80 12	103 8,9	127 4,8			
	150 VVF 56		1 min 15 s									150	110		
	RVF 162 Optima +	tr/min U/min rpm	0 → 0,9									2 x 7,5	2 x 5,5		

 IEC 60204-32	kVA
400 V (+10% -10%) 50 Hz	150 HPL™ + 150 VVF : 254 → 134 kVA 270 LVF + 150 VVF : 350 → 182 kVA 

480 V - 60 Hz													ch - PS hp	kW	
	180 HPL™ 120	m/min t	56 12	69 9	92 6	145 3	210 1,5	28 24	34,5 18	46,5 12	74 6	105 3,2	180	132	552 m
	320 LVF 120 Optima	m/min t	101 12	130 9	177 6	243 3,8	254 3	50,5 24	65 18	95 12	122 9	127 7,6			
	150 VVF 56		1 min 15 s									150	110		
	RVF 162 Optima +	tr/min U/min rpm	0 → 0,9									2 x 7,5	2 x 5,5		

 IEC 60204-32	kVA
480 V (+6% -10%) 60 Hz	180 HPL™ + 150 VVF : 278 → 146 kVA 320 LVF + 150 VVF : 390 → 202 kVA 

	FR	DE	EN	ES	IT	PT	RU
	Équipements standards	Standardausrüstungen	Standard equipment	Equipamiento de serie	Equipaggiamento standard	Equipamento de série	Стандартное оборудование
	Équipements optionnels	Sonderausrüstungen	Options	Equipamiento opcional	Equipaggiamento in opzione	Equipamento opcional	Дополнительное оборудование (опция)
	Réactions en service	Reaktionskräfte in Betrieb	Reactions in service	Reacciones en servicio	Reazioni in servizio	Reacções em serviço	Реакция при работе
	Réactions hors service	Reaktionskräfte außer Betrieb	Reactions out of service	Reacciones fuera de servicio	Reazioni fuori servizio	Reacções fora de serviço	Реакция в покое
	Poids à vide sans lest avec flèche et hauteur maximum	Gewicht ohne Last, ohne Ballast, mit Ausleger und max. Höhe	Weight without load, without ballast, with jib and max. height	Peso en vacío sin lastre, con flecha y altura máxima	Peso a vuoto, senza zavorra, con braccio e altezza massimi.	Peso em vazio sem lastro com lança e altura máxima.	Вес пустого, без балласта, со стрелой, максимальной высоты.
	Poids de flèche	Auslegergewicht	Jib weight	Peso de flecha	Peso del braccio	Peso da lança	вес стрелы
	Poids total du lest	Ballast-Gesamtgewicht	Total ballast weight	Peso total del lastre	Peso totale della zavorra	Peso total do lastro	Общий вес балласта
	Distance entre cadres	Abstand zwischen den Rahmen	Distance between collars	Distancia entra marcos	Distanza fra i telai	Distância entre quadros	Расстояние между рамками крепления
	Axe articulation flèche	Auslegergelenk-achse	Jib articulation axis	Eje de articulación de la flecha	Perno di articolazione del braccio	Eixo de articulação da lança	Ось шарнира стрелы
	Position girouette	Windfreistellung	Weather vane position	Posición veleta	Libera rotazione	Posição em cata-vento	Флюгер
	Camion 13,4 m	Lkw 13,4 m	Lorry 13,4 m	Camión 13,4 m	Camion 13,4 m	Camião 13,4 m	Рзусовой автомобиль 13,4 м
	Conteneur High Cube 40', et/ou Flat Rack 20'	Container High Cube 40', und/oder Flat Rack 20'	Container High Cube 40', and/or Flat Rack 20'	Contenedor High Cube 40', y/o Flat Rack 20'	Container High Cube 40', e/o Flat Rack 20'	Contentor High Cube 40' e/ou Flat Rack 20'	40-футовый контейнер повышенной вместимости High Cube, и/или 20-футовая открытая платформа Flat Rack
	Levage	Heben	Hoisting	Elevación	Sollevamento	Elevação	Подъем
	Relevage	AL-Verstellen	Luffing	Izado	Brandeggio	Levantamento	Маховый подъем
	Orientation	Schwenken	Slewing	Orientación	Rotazione	Rotação	Поворот
	Puissance requise	Erforderliche Leistung	Required power	Potencia Necesaria	Potenza richiesta	Potência Necessária	Потребляемая мощность
	Fonction Power Control : vitesses treuils adaptées à la puissance disponible	Funktion Power Control: Geschwindigkeiten der Triebwerke werden an die verfügbare Leistung angepasst	Power Control Function: winch speeds adapted to the available power	Función Power Control: marchas de los cabrestantes adaptadas a la potencia disponible	Funzione Power Control: velocità degli argani adattate alla potenza disponibile	Função Power Control: velocidades de guincho adaptadas à potência disponível	Функция контроля мощности Power Control: регулировка скорости лебедок в зависимости от доступной мощности
	Nous consulter	Auf Anfrage	Consult us	Consultarnos	Consultateci	Consultar-nos	Проконсультируйтесь у нас
	Document commercial non contractuel. Pour toute information technique se référer à la notice correspondante.	Unverbindliches Vertriebsdokument. Für technische Informationen, siehe die entsprechenden Anweisungen.	This commercial document is not legally binding. For any technical information, please refer to the corresponding instructions.	Documento comercial no contractual. Para cualquier información técnica, ver la noticia correspondiente.	Documento commerciale non vincolante, per tutte le informazioni tecniche fare riferimento al catalogo istruzioni.	Documento comercial não contratual. Para qualquer informação técnica complementar consultar as respectivas instruções.	Этот коммерческий документ не является юридически обязательным. Для получения технической информации, см. соответствующие инструкции.

