



MLC300

with Fixed Position Counterweight

Maximum capacity: 330 USt (300 t)

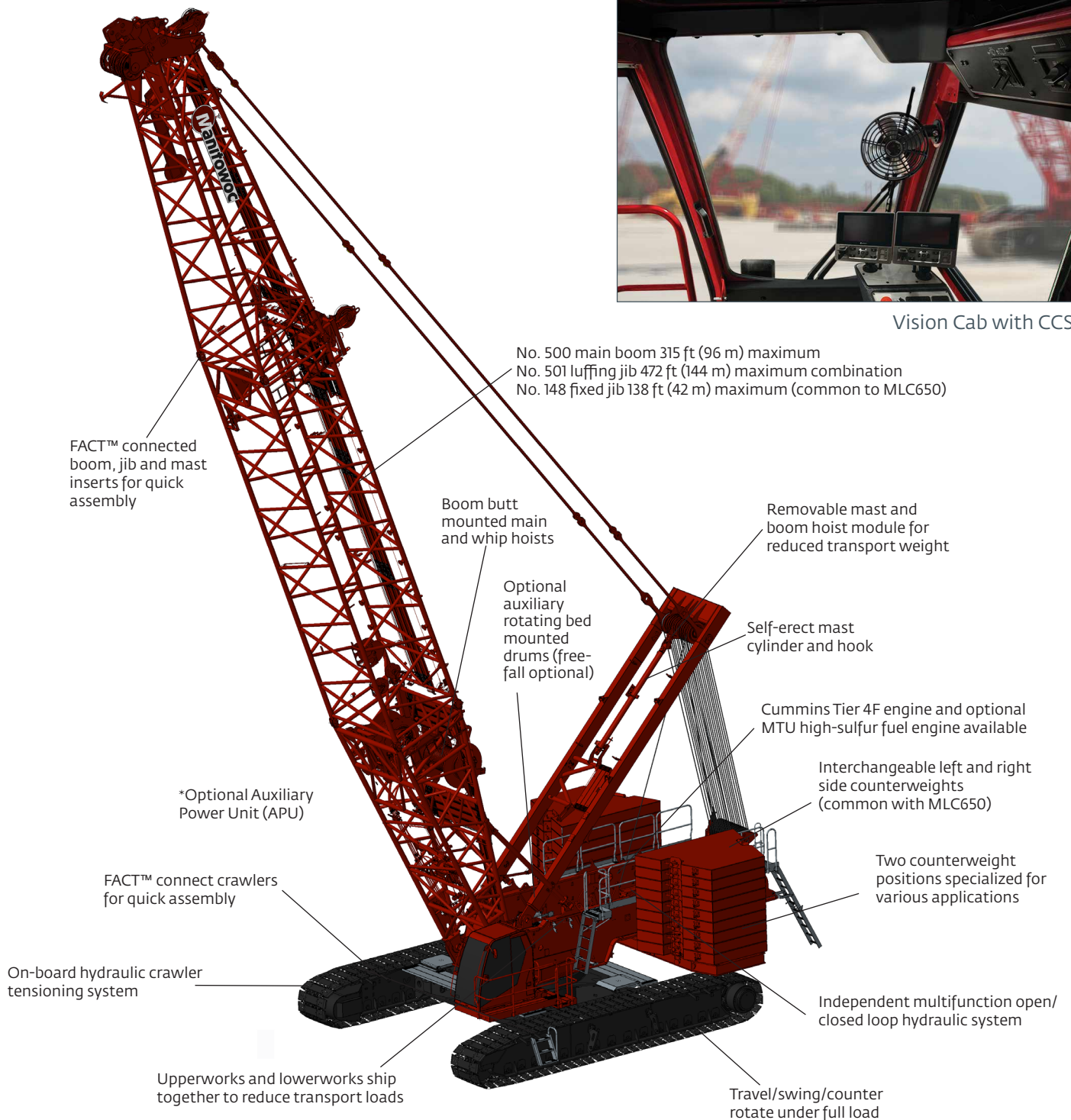
Maximum load moment: 14,330 ft-kip (1981 m-t)

Maximum boom length: 315 ft (96 m)

Maximum luffing jib length: 315 ft (96 m)



Vision Cab with CCS



➤ Contact your local dealer for more information; or find one on the dealer locator at www.manitowoc.com

Benefits

Unmatched capacity

- Strongest load charts in its class
- Travel, swing and counter-rotate with full rated capacity

Optimized productivity

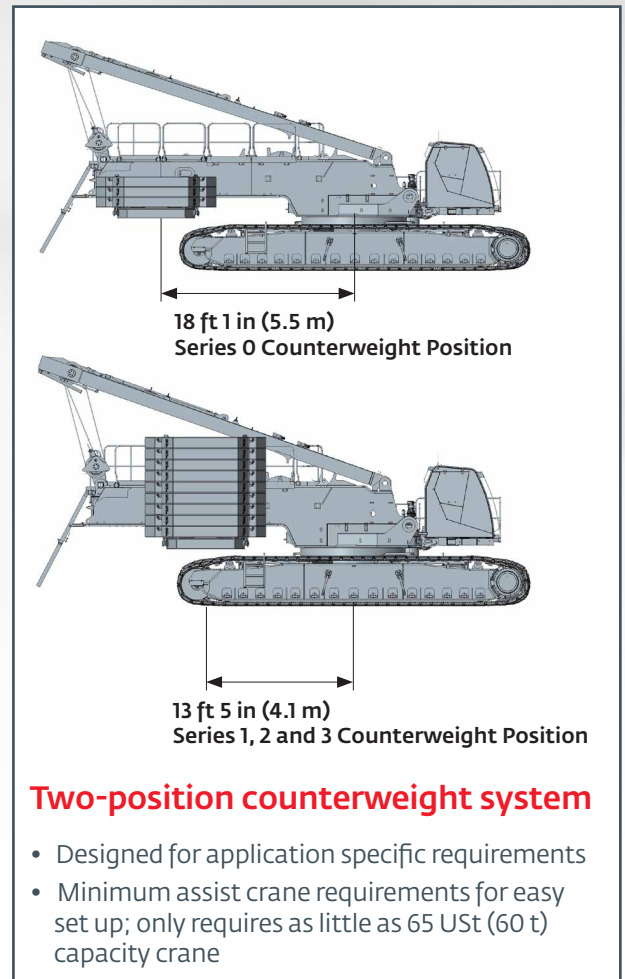
- Upperworks and carbody shipped together (reduced set up time)
- Raise full boom and luffing jib combinations without assist (no outriggers)
- Self-erect mast cylinder (reduced setup time)
- FACT™ connection technology on boom and crawler connections (easy and reliable assembly/disassembly)
- Improved boom handling lugs (reduced setup time)
- No carbody counterweights required (reduced setup time)

Vision cab with Crane Control System (CCS)

- CCS with user-friendly interface, two full graphic displays mounted horizontally for better visibility, a jog dial for easier data input and ergonomic joysticks
- Fully enclosed and insulated galvanized steel module
- Power cab tilt
- Swing and travel alarms ensure maximum operator awareness
- Operator's station swings over front of rotating bed for easy transportation
- Nylon protective window covers

Crawler tensioning system

- Each crawler is equipped with dedicated hydraulically activated cylinder and hydraulic supply
- Allows independent track tension adjustment via crane setup remote and standard hydraulic connection



Transport

- Designed to be transported globally by optimizing component weights and dimensions
- Boom inserts are designed to allow luffing jib inserts to ship within the boom inserts for cost effective transport

PRELIMINARY - Capacities

Main boom

B10:500 boom											
Series 3 - 440,900 lb at 13 ft 5 in				** Series 2 - 396,800 lb at 13 ft 5 in				* Series 1 - 308,600 lb at 13 ft 5 in			

360° Radius (ft)	lb x 1000											
	Boom length (ft)											
	98	118	138	157	177	197	217	236	256	276	295	315
18	648.1*											
20	648.1*	626.9*										
24	563.6*	546.5*	527.9*	508.0*	481.2*							
28	452.2*	451.3*	449.9*	475.1**	458.3**	420.8	373.4					
32	360.6*	437.1**	435.8**	427.9**	424.2	399.6	357.4	307.7	256.4			
36	363.3**	362.7**	361.7**	392.5	386.5	378.1	339.9	302.8	254.3	215.1	181.9	156.7
40	309.4**	336.8	335.8	334.5	333.8	332.0	323.3	289.0	252.3	213.3	180.3	155.2
50	223.0**	243.4	242.6	241.4	240.9	239.3	238.6	236.7	235.9	208.8	172.4	151.7
60	171.9**	188.1	187.4	186.2	185.8	184.3	183.6	181.8	181.0	179.2	158.3	148.5
70	138.0**	151.5	150.8	149.7	149.3	147.8	147.2	145.4	144.6	142.8	142.2	140.4
80	113.8**	125.4	124.8	123.7	123.4	121.9	121.3	119.5	118.7	116.9	116.4	114.6
90	95.7**	105.9	105.4	104.3	104.0	102.5	101.9	100.1	99.3	97.5	97.0	95.2
100	81.2**	90.7	90.3	89.2	88.9	87.4	86.8	85.1	84.2	82.5	82.0	80.2
110		78.5	78.1	77.1	76.9	75.3	74.8	73.0	72.2	70.4	69.9	68.1
120			68.2	67.2	67.0	65.5	65.0	63.2	62.4	60.6	60.1	58.3
130			59.8	58.9	58.8	57.3	56.7	55.0	54.2	52.4	51.9	50.1
140				51.9	51.8	50.3	49.8	48.0	47.2	45.4	45.0	43.2
150				45.8	45.8	44.3	43.8	42.1	41.3	39.5	39.1	37.2
160					40.5	39.1	38.7	36.9	36.1	34.3	33.9	32.1
170					35.8	34.5	34.1	32.4	31.6	29.8	29.4	27.6
180						30.5	30.1	28.4	27.6	25.8	25.4	23.6
190						26.8	26.5	24.8	24.0	22.2	21.9	20.0
200							23.2	21.6	20.8	19.0	18.7	16.9
220								16.0	15.3	13.5	13.2	11.1
240									10.5			

PRELIMINARY - Capacities

Duty cycle and clamshell

Clamshell capacities are denoted by **BOLD**

B10:500 boom limited duty cycle and clamshell			
Counterweight: Series 0 - 176,552 lb at 18 ft 1 in			
360° Radius (ft)	lb x 1000		
	Boom length (ft)		
	98	118	138
25	44.0	44.0	
30	44.0	44.0	44.0
40	44.0	44.0	44.0
50	44.0	44.0	44.0
60	44.0	44.0	44.0
70	44.0	44.0	44.0
80	44.0	44.0	44.0
90	40.9	39.8	38.8
100		33.4	32.6
110		27.9	27.3
120			22.6
130			18.3

PRELIMINARY - Working range

LJ10:501 luffing jib on B10:500 boom; 86° boom angle					
Series 3 - 440,900 lb at 13 ft 5 in					
360°	lb x 1000				

98 ft boom					
Radius (ft)	Luffing Jib Length (ft)				
	79	138	197	256	295
45	278.0				
50	249.6				
60	198.4	190.5			
70	163.9	159.4	130.3		
80	139.1	135.2	125.4		
90	120.1	117.0	112.7	73.0	
100		102.7	98.7	71.1	49.3
120		81.8	78.2	67.6	46.2
140		67.0	63.8	60.3	43.5
160			53.2	49.8	41.1
180			45.0	41.8	39.0
200			38.4	35.4	33.3
220				30.1	28.1
240				25.8	23.8
260				22.0	20.2
280					17.1

138 ft boom					
Radius (ft)	Luffing Jib Length (ft)				
	79	138	197	256	295
45	278.8				
50	243.9				
60	194.4	187.3			
70	160.9	156.1			
80	136.6	132.6	116.2		
90	118.2	114.8	110.4	67.3	
100		100.8	96.7	66.0	46.5
120		80.3	76.6	63.4	44.1
140		65.9	62.6	59.0	41.9
160			52.1	48.7	39.8
180			44.1	40.8	37.9
200			37.6	34.5	32.4
220				29.4	27.4
240				25.1	23.1
260				21.4	19.6
280					16.5

157 ft boom					
Radius (ft)	Luffing Jib Length (ft)				
	79	138	197	256	295
45	273.2				
50	240.8				
60	192.1	183.8			
70	159.2	154.3			
80	135.3	131.1	107.5		
90	117.1	113.6	106.3	63.9	
100		99.8	95.6	62.9	44.7
120		79.5	75.8	60.6	42.7
140		65.3	61.9	58.2	40.7
160			51.6	48.1	38.8
180			43.6	40.3	37.1
200			37.2	34.0	31.9
220				29.0	26.9
240				24.7	22.7
260				21.1	19.2
280					16.2
300					13.5

197 ft boom				
Radius (ft)	Luffing Jib Length (ft)			
	79	118	157	177
45	226.7			
50	213.6			
60	187.4	164.0		
70	155.4	152.3	121.9	105.7
80	132.3	129.6	119.1	103.9
90	114.6	112.4	109.2	101.7
100		98.9	95.9	94.4
120		78.9	76.3	74.9
140			62.5	61.3
160			52.2	51.1
180				43.2

