

GHC30

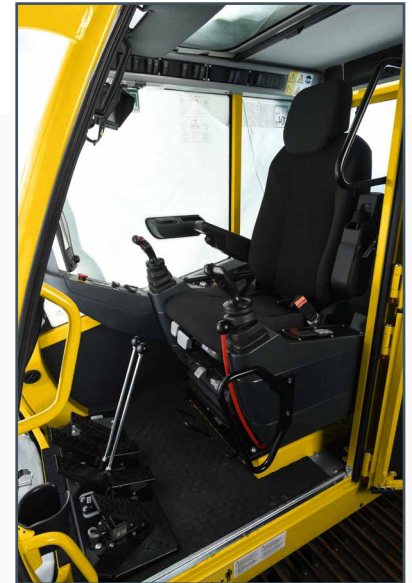
PRELIMINARY

Capacity: 30 USt (30 t)

Main boom: 33 ft - 83 ft (10 m - 25,2 m) three-section full power boom

Maximum boom extension: Optional 42 ft 8 in (13 m) offsettable, bi-fold, swingaway

Maximum tip height: 132 ft (40,2 m)



Operator's cab



*Tier 4 engine required in North America and Canada

Unmatched capacity

- 30 USt (30 t) rated
- Excellent capacities at mid-range: 21,200 lb (11,000 kg) at a radius of 25 ft (7 m) with 57.7 ft (17.6 m) of boom extended
- Superior capacities at reach: 3500 lb (1500 kg) at a max radius of 70 ft (22 m)

Outstanding versatility and durability

- 132 ft (40,2 m) maximum tip height with optional 42 ft 8 in (13 m) offsettable boom extension for increased reach
- Optional auger, pole claw and personnel basket attachments provide maximum versatility on the job
- Cummins QSB 4.5L Tier 3 or Tier 4 final diesel engine — proven performance that conforms to EPA requirements
- Work at up to 4° of inclination
- 70% gradeability (theoretical), allowing the operator to tackle the most daunting terrains
- 34.7 ft x 9.8 ft x 10 ft (10,6 m x 3 m x 3 m) compact dimensions make transportation easy.
- Maneuverability on the tightest jobs is no issue with a tail swing of only 10.8 ft (3,3 m).

Easy to transport

- Transports to the jobsite complete in one load
- Retracted travel gauge
- Compact dimensions
- Drive off the trailer and go to work

Excellent serviceability

- Central, easily accessible lubricating points
- Foldable access platforms on both sides of the upper carriage
- Work lights in both the engine and hydraulic compartments
- 3-micron filters provide optimal protection, cleaner oil and extended oil service life
- Storage box for tools, rigging equipment

Strong undercarriage with excellent mobility

- 100% pick and carry
- Two-speed hydrostatic drive
- Hydraulically extendable and retractable crawlers
- Allows for skid steering and counter-rotation

Optional attachments

- 21 ft 4 in (6,5 m) swingaway boom extension. Offsettable at 0° and 40°.
- 42 ft 8 in (13 m) bi-fold swingaway extension. Offsettable at 0° and 40°.
- Hydraulic auger mounted to boom base section; 24 in (609,6 mm), 36 in (914,4 mm) and 48 in (1219,2 mm) flights available
- Pole claw
- 1200 lb (544,3 kg) personnel basket

Outstanding operator ergonomics in a large, high-visibility cab



- 15° tilt cab
- Load-sensing, electric dual-axis joystick controls
- Air-suspended, heated operator seat
- Color monitor for up to four exterior cameras
- Graphical RCL for load moment with advanced crane performance optimization and diagnostics
- Climate control provides all day comfort



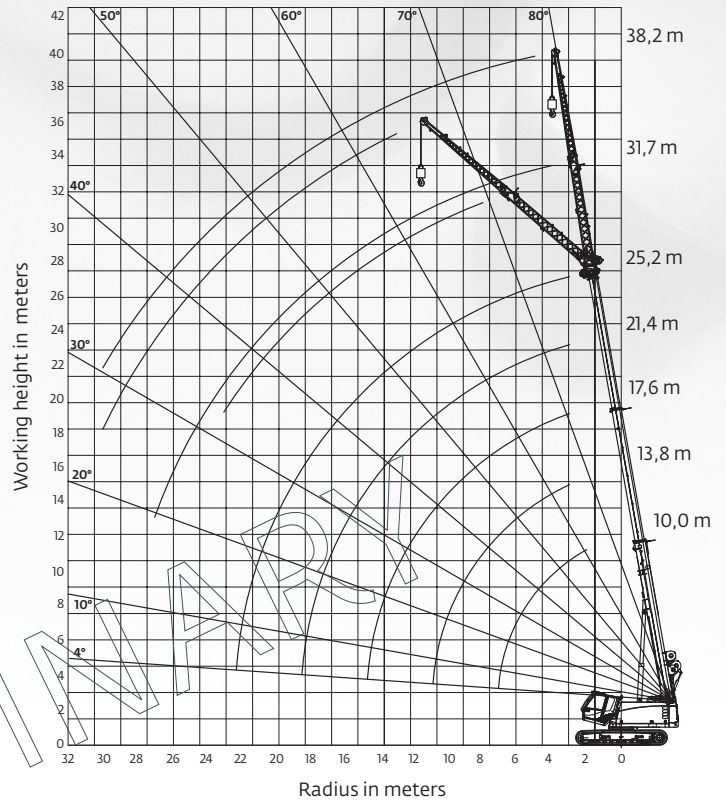
PRELIMINARY -Working range and load chart



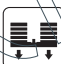


Metric 75%


 10 m - 25.2 m
  5 t
  100%
  360°


  Kilograms

Meters	10.0	13.8	17.6	21.4	25.2
2.5	30.0				
3.0	28.5	19.0	19.0	14.2	10.3
4.0	24.5	19.0	18.3	13.2	9.8
5.0	18.8	18.5	16.9	12.0	9.3
6.0	13.6	14.0	13.6	10.8	8.6
7.0	10.5	10.8	11.0	10.0	7.9
8.0		8.7	8.8	8.9	7.3
10.0		6.0	6.2	6.3	6.4
12.0			4.5	4.7	4.7
14.0			3.5	3.6	3.6
16.0				2.8	2.8
18.0				2.2	2.3
20.0					1.8
22.0					1.5



 10 m - 25.2 m
  13.0 m
  5 t
  100%
  360°


  Kilograms

Meters	10.0		13.8		17.6		21.4		25.2	
	13.0		13.0		13.0		13.0		13.0	
	0°	40°	0°	40°	0°	40°	0°	40°	0°	40°
3.0	3.5		3.5		3.5					
4.0	3.5		3.5		3.5		3.2			
5.0	3.5		3.5		3.5		3.2		2.4	
6.0	3.5		3.5		3.5		3.2		2.4	
7.0	3.3		3.4		3.4		3.2		2.4	
8.0	3.1		3.3		3.3		3.1		2.4	
10.0	2.6	1.7	2.9	1.7	3.0		2.8		2.4	
12.0	2.3	1.6	2.5	1.7	2.7	1.7	2.6	1.6	2.4	
14.0	2.0	1.5	2.3	1.6	2.4	1.6	2.4	1.5	2.4	1.5
16.0	1.8	1.4	2.0	1.5	2.2	1.5	2.2	1.4	2.1	1.4
18.0	1.6		1.8	1.4	2.0	1.4	2.0	1.4	2.0	1.4
20.0			1.6	1.4	1.8	1.4	1.9	1.3	1.8	1.3
22.0			1.4		1.7	1.3	1.6	1.3	1.6	1.3
24.0					1.4		1.3	1.3	1.2	1.2
26.0							1.0	1.2	0.9	1.2
28.0							0.8		0.7	1.0
30.0									0.6	0.8



© The Manitowoc Company, Inc.
2/2017
www.manitowoc.com