

# RT525

**25 TON CAPACITY  
28 ft. - 70 ft. BOOM**

**(FULL POWER)**

**PCSA CLASS 10-80**

**85% OF TIPPING - ON OUTRIGGERS**

**75% OF TIPPING - ON RUBBER**

## JIB CAPACITIES IN POUNDS

### 23 ft. "A" FRAME JIB

MAIN BOOM ANGLE	0° OFFSET		15° OFFSET		30° OFFSET	
	Radius (Ref.)	Cap. lbs.	Radius (Ref.)	Cap. lbs.	Radius (Ref.)	Cap. lbs.
75°	27.0	12,000	32.5	7,700	35.7	5,070
70	33.3	10,400	38.1	7,000	41.2	4,800
65	40.2	8,300	44.9	6,300	47.8	4,500
60	47.0	5,870	51.3	5,450	54.0	4,300
55	53.2	4,450	57.3	4,080	59.8	3,690
50	59.2	3,560	62.9	3,170	65.1	3,030
45	64.7	2,910	68.0	2,610	69.9	2,590
40	69.6	2,400	72.6	2,230	74.2	2,160
35	74.0	2,020	76.6	1,920	77.9	1,880
30	77.8	1,730	80.1	1,680	81.0	1,670

A6-829-0037551

### 23 ft. - 38 ft. TELE. JIB

Boom Angle	23 ft. Jib Length (Fully Retracted)						33 ft. Jib Length						38 ft. Jib Length (Fully Extended)					
	0° Offset		15° Offset		30° Offset		0° Offset		15° Offset		30° Offset		0° Offset		15° Offset		30° Offset	
	Radius (Ref.) ft.	Cap. lbs.	Radius (Ref.) ft.	Cap. lbs.	Radius (Ref.) ft.	Cap. lbs.	Radius (Ref.) ft.	Cap. lbs.	Radius (Ref.) ft.	Cap. lbs.	Radius (Ref.) ft.	Cap. lbs.	Radius (Ref.) ft.	Cap. lbs.	Radius (Ref.) ft.	Cap. lbs.	Radius (Ref.) ft.	Cap. lbs.
75°	27.0	12,500	31.4	7,300	35.0	4,500	29.0	7,600	35.3	4,900	41.5	2,900	31.0	5,000	39.0	3,750	45.4	2,230
70	33.3	5,390	37.6	6,190	40.6	4,150	35.3	6,300	42.3	4,270	48.8	2,650	37.9	4,650	45.6	3,300	51.8	1,900
65	40.2	4,670	44.7	5,730	47.2	3,900	43.9	5,300	50.2	3,820	56.1	2,440	46.3	4,470	53.7	2,950	59.5	1,670
60	47.0	3,020	51.3	4,530	53.8	3,630	51.6	4,300	57.5	3,450	63.8	2,330	54.3	3,550	61.2	2,640	66.4	1,770
55	53.2	3,660	57.3	3,420	59.5	3,120	58.2	3,320	64.3	2,770	69.2	2,230	62.0	2,910	68.4	2,450	72.9	1,660
50	59.2	3,060	62.9	2,790	65.1	2,630	65.7	2,190	70.7	2,190	74.9	1,910	69.2	2,450	75.0	2,030	78.9	1,620
45	64.7	2,450	68.0	2,230	69.9	2,130	71.9	2,060	76.3	1,730	80.2	1,600	73.8	1,920	81.1	1,660	84.3	1,500
40	69.6	1,960	72.6	1,870	74.2	1,750	77.7	1,640	81.7	1,400	84.7	1,360	81.8	1,460	86.4	1,360	89.0	1,240
35	74.0	1,560	76.6	1,530	77.9	1,440	82.2	1,300	86.2	1,150	88.6	1,130	87.2	1,060	91.2	1,020	93.0	960
30	77.8	1,290	80.1	1,270	81.0	1,230	87.3	1,020	90.2	940	91.8	920	92.0	860	95.2	840	96.5	830

A6-829-0038077

No load stability on outriggers 360° with 23 ft. - 38 ft. tele. jib installed

	Tele-jib Fully Retracted 93 ft.	33 ft. Tele-jib Length 103 ft.	Tele-jib Fully Extended 108 ft.
Minimum boom angle for indicated boom length	0°	0°	0°
Maximum boom length including jib for 0° boom angle	93 ft.	103 ft.	108 ft.

### NOTES FOR JIB CAPACITIES

- 23 ft. jib and 23 ft. tele. jib length may be used for double lifting service. 33 ft. and 38 ft. tele. jib lengths may be used for single lifting service only. Capacities are based on structural strength of every jib at a given main boom angle regardless of main boom length.
- WARNING:** Operation of machine with heavier loads than the capacities listed is strictly prohibited. Machine tipping with jib occurs rapidly and without advance warning.
- Capacities listed are with fully extended outriggers only.
- WARNING:** Lifting on rubber with jib is prohibited.
- Reference radii listed are for fully extended main boom only.
- No load stability on outriggers with:
  - 23 ft. Jib Installed -
    - Minimum boom angle for fully extended main boom = 0°
    - Maximum boom length at 0° main boom angle = 93 ft.





# RT

25 TON  
28 ft. - 70 ft.

(FULL)  
PCSA C  
85% OF TIPPING  
75% OF TIPPI

## ON OUTRIGGERS FULLY EXTENDED - 360°

Radius in Feet	Main Boom Length in Feet							
	28	34	40	46	52	58	64	70
10	50,000 (64)	36,000 (69)	36,000 (73)					
12	40,000 (59.5)	36,000 (65.5)	36,000 (70)	35,000 (73)				
15	31,000 (51.5)	31,000 (59.5)	30,950 (65)	30,330 (69)	29,750 (72)	29,150 (74.5)		
20	23,200 (36.5)	23,200 (49)	23,200 (57)	23,200 (62)	23,000 (66)	22,600 (69.5)	22,250 (72)	20,500 (74)
25	17,950 (61)	17,950 (66)	17,950 (67.5)	17,950 (69.5)	17,950 (70)	17,950 (70)	17,950 (70)	17,650 (69.5)
30		13,470 (15.5)	13,470 (16.5)	13,470 (16.5)	13,470 (15)	13,470 (15)	13,470 (16)	13,470 (16)
35	See Warning Note 18		10,220 (20)	10,220 (16.5)	10,220 (15.5)	10,220 (15.5)	10,220 (15.5)	10,220 (16)
40				8,010 (23)	8,010 (16.5)	8,010 (15)	8,010 (15.5)	8,010 (15)
45					6,530 (25)	6,530 (17)	6,530 (14.5)	6,530 (14.5)
50						5,430 (26.5)	5,430 (17)	5,430 (14.5)
55							4,440 (13.5)	4,440 (15)
60								3,620 (11)
65								2,980 (11.5)
Min. boom angle (deg.) for indicated length (no load)								
Max. boom length (ft.) at 0 deg. boom angle (no load)								

NOTE: Boom angles are in degrees. A4-829-00599 & -0037168

## RATED LIFTING CAPACITY 28 ft. - 70 ft.

14.00x24 TIRES

Radius in Feet	Stationary Capacity	Stationary Capacity
	Defined Arc (3) Over Front	360° Arc
10	25,600 (a)	21,100 (a)
12	21,500 (a)	15,780 (a)
15	17,770 (a)	10,430 (b)
20	12,840 (b)	5,950 (c)
25	8,480 (b)	3,570 (c)
30	6,230 (c)	2,320 (e)
35	4,650 (d)	1,470 (f)
40	3,520 (e)	910 (f)
45	2,660 (f)	
50	2,020 (g)	
55	1,520 (g)	
60	1,130 (h)	
65	880 (h)	

A6-829

Maximum Permissible Load  
(a) 28 ft. (e) 52 ft.  
(b) 34 (f) 58  
(c) 40 (g) 64  
(d) 46 (h) 70

## ON OUTRIGGERS FULLY EXTENDED - OVER FRONT

Radius in Feet	Main Boom Length in Feet							
	28	34	40	46	52	58	64	70
10	50,000 (64)	36,000 (69)	36,000 (73)					
12	40,000 (59.5)	36,000 (65.5)	36,000 (70)	35,000 (73)				
15	31,000 (51.5)	31,000 (59.5)	30,950 (65)	30,330 (69)	29,750 (72)	29,150 (74.5)		
20	23,200 (36.5)	23,200 (49)	23,200 (57)	23,200 (62)	23,000 (66)	22,600 (69.5)	22,250 (72)	20,500 (74)
25	17,950 (61)	17,950 (66)	17,950 (67.5)	17,950 (69.5)	17,950 (70)	17,950 (70)	17,950 (70)	17,650 (69.5)
30		13,350 (15.5)	13,350 (16.5)	13,350 (16.5)	13,350 (15)	13,350 (15)	14,950 (16)	14,750 (16)
35	See Warning Note 18		11,900 (20)	11,900 (16.5)	11,900 (15.5)	11,900 (15.5)	11,900 (15.5)	11,900 (16)
40				9,410 (23)	9,410 (16.5)	9,410 (15)	9,410 (15.5)	9,410 (15)
45					7,720 (25)	7,720 (17)	7,720 (14.5)	7,720 (14.5)
50						6,410 (26.5)	6,410 (17)	6,410 (14.5)
55							5,410 (13.5)	5,410 (15)
60								4,530 (11)
65								3,780 (11.5)
Min. boom angle (deg.) for indicated length (no load)								
Max. boom length (ft.) at 0 deg. boom angle (no load)								

NOTE: Boom angles are in degrees. A4-829-00599 & -0037168

From:	Min. Boom Angle (deg.) for indicated length (no load)
30°	Min. Boom Length (ft.) at 0 degree boom angle (no load)
36°	Min. Boom Length (ft.) at 0 degree boom angle (no load)

### GENERAL:

- Rated loads as shown on lift chart are for the machine as shown and equipped. Modifications to the machine that are not specified can result in a reduction of rated capacity.
- Construction equipment can be used for operation and maintenance of the machine. For information in the operator's manual, parts list, or other manuals are missing, order distributor.
- The operator and other personnel should be trained themselves with the latest applicable Safety Standards for cranes.

### SETUP:

- The machine shall be leveled on a firm, level surface. If the machine is on outrigger floats or tires to spread the load, the outrigger operation, outrigger operation, and outrigger operation shall be in accordance with written procedure.
- If machine is equipped with outrigger jacks, they shall be fully extended before operation.
- Tires shall be inflated to the recommended inflation pressure.
- With certain boom and hoist tackle, the maximum obtainable with standard cable length shall be used.

### OPERATION:

- Rated loads at rated radius shall determine allowable loads. For class 1 and class 2 loads, the load must not exceed 80% of the rated load.
- Rated loads do not exceed 85% of the rated load.
- Rated loads include the weight of the load. Their weights shall be subtracted from the rated load.
- Load ratings are based on freely suspended loads horizontally on the ground in the direction of the boom.
- Rated loads do not account for wind. When wind velocity is above 20 mph, the rated loads shall be appropriately reduced.



# RT525

5 TON CAPACITY

ft. - 70 ft. BOOM

(FULL POWER)

PCSA CLASS 10-80

TIPPING - ON OUTRIGGERS

OR TIPPING - ON RUBBER

# GROVE®

FULL HYDRAULIC

# SELF-PROPELLED CRANE

## LIFTING CAPACITIES IN POUNDS

ft. - 70 ft. BOOM

### ON RUBBER CAPACITIES

#### 4 TIRES

Stationary Capacity	Pick & Carry Cap. Up to 2.5 MPH
360° Arc	Boom Centered (2) Over Front
11,100 (a)	21,610 (a)
5,780 (a)	18,520 (a)
0,430 (b)	15,050 (a)
5,950 (c)	12,060 (a)
3,570 (d)	8,480 (b)
2,320 (e)	6,230 (c)
1,470 (f)	4,650 (d)
910 (f)	3,000 (d)
	2,270 (e)
	1,680 (f)
	1,220 (f)

AG-829-00743F

#### 16.00x25 TIRES

Radius in Feet	Stationary Capacity	Stationary Capacity	Pick & Carry Cap Up to 2.5 mph
	Defined Arc (3) Over Front	360° Arc	Boom Centered (7) Over Front
10	29,150 (a)	19,640 (a)	30,460 (a)
12	24,030 (a)	14,600 (a)	26,320 (a)
15	20,150 (a)	10,390 (b)	21,670 (a)
20	13,350 (b)	5,980 (c)	13,350 (a)
25	8,610 (b)	3,500 (d)	8,290 (b)
30	6,290 (c)	2,160 (e)	6,290 (c)
35	4,650 (d)	1,430 (f)	4,650 (d)
40	3,620 (e)	810 (f)	3,620 (d)
45	2,800 (f)		2,800 (e)
50	2,120 (g)		2,120 (f)
55	1,630 (g)		1,630 (f)
60	1,240 (h)		
65	960 (h)		

AG-829-003757F

#### 20.5x25 TIRES

Radius in Feet	Stationary Capacity		Pick & Carry Capacity Up to 2.5 MPH
	Defined Arc Over Front (3)	360° Arc	Boom Centered Over Front (7)
10	28,380 (a)	24,450 (a)	26,020 (a)
12	23,800 (a)	17,190 (a)	22,420 (a)
15	19,100 (a)	11,640 (b)	18,380 (a)
20	13,940 (b)	7,180 (c)	13,940 (a)
25	9,160 (b)	4,330 (c)	9,160 (b)
30	6,640 (c)	2,930 (d)	6,640 (c)
35	5,100 (d)	2,000 (e)	5,100 (d)
40	4,020 (e)	1,370 (f)	4,020 (d)
45	3,140 (f)	880 (g)	3,140 (e)
50	2,430 (g)		2,430 (f)
55	1,860 (g)		1,860 (f)
60	1,440 (h)		
65	1,100 (h)		

AG-829-003745G

### NOTES FOR RUBBER CAPACITIES

- Capacities do not exceed 75% of tipping loads as determined by test in accordance with SAE J-765.
- Capacities are applicable to machines equipped with:
 

14.00x24 (20 ply)	Cold Inflation	2.5 MPH
16.00x25 (20 ply)	115 PSI	110 PSI
20.5x25 (20 ply)	95 PSI	80 PSI
	80 PSI	65 PSI

- Defined Arc - Over front includes  $\pm 6^\circ$  on either side of longitudinal centerline of machine.
- Capacities appearing above bold line are based on structural strength and tipping should not be relied upon as a capacity limitation.
- Capacities are applicable only with machine on a firm level surface.
- On rubber lifting with jib not permitted.
- For pick and carry operation, boom must be centered over front of machine and mechanical swing lock engaged. When handling loads in the structural range with capacities close to maximum ratings, travel should be reduced to creep speed.
- Axle lockouts must be functioning before lifting on rubber. [Check automatic lockout system for proper functioning: Refer to "Operation and Maintenance Manual" for description of a proper functioning axle lockout system].
- All lifting depends on proper tire inflation, capacity and condition. Capacities must be reduced for lower tire inflation pressures. See lifting capacity chart for tire used. Damaged tires are hazardous to safe operation of crane.

#### Permissible Boom Length:

- (e) 52 ft.
- (f) 58
- (g) 64
- (h) 70

	Main Boom (10%)	Main Boom (10%)
Indicated Boom Length	0	0
Edgewise Boom Angle	70	83
Indicated Boom Length	92	51
Edgewise Boom Angle	52	51

### LIFTING CAPACITY NOTES

Lift chart pertain to this machine as originally manufactured. Capacities may be reduced due to modifications to the machine or use of optional equipment other than that specified in the manual, resulting in a reduction of capacity.

Operation of this machine shall be in compliance with the manufacturer's instructions, parts, and safety manuals supplied with this machine. Repairs, modifications, or replacement of parts shall be made through the manufacturer.

Personnel associated with this machine shall fully acquaint themselves with applicable American National Standards Institute (ANSI) standards.

Machine shall be operated on a firm supporting surface. Depending on the nature of the surface, it may be necessary to have structural supports under the spread the load to a larger bearing surface.

Outriggers shall be fully extended with tires raised free of the ground when lifting the boom or lifting loads.

When using the front jack cylinder, the front jack cylinder shall be set in accordance with the manufacturer's instructions. The counterweight shall be set in accordance with the manufacturer's instructions.

Do not exceed the recommended pressure before lifting on rubber. Do not exceed the recommended pressure before lifting on rubber. Do not exceed the recommended pressure before lifting on rubber.

Do not exceed the recommended pressure before lifting on rubber. Do not exceed the recommended pressure before lifting on rubber. Do not exceed the recommended pressure before lifting on rubber.

Do not exceed the recommended pressure before lifting on rubber. Do not exceed the recommended pressure before lifting on rubber. Do not exceed the recommended pressure before lifting on rubber.

Do not exceed the recommended pressure before lifting on rubber. Do not exceed the recommended pressure before lifting on rubber. Do not exceed the recommended pressure before lifting on rubber.

Do not exceed the recommended pressure before lifting on rubber. Do not exceed the recommended pressure before lifting on rubber. Do not exceed the recommended pressure before lifting on rubber.

- Rated loads are for lift crane service only.
- Do not operate at a radius or boom length where capacities are not listed. At these positions, the machine may overturn without any load on the hook.
- The maximum load which can be telescoped is not definable because of variations in loadings and crane maintenance, but it is safe to attempt retraction and extension within the limits of the capacity chart.
- When either boom length or radius or both are between values listed, the smallest load shown at either the next larger radius or boom length shall be used.
- For safe operation, the user shall make due allowances for his particular job conditions, such as: soft or uneven ground, out of level conditions, high winds, side loads, pendulum action, jerking or sudden stopping of loads, hazardous conditions, experience of personnel, two machine lifts, traveling with loads, electric wires, etc. Side pull on boom or jib is extremely dangerous.
- Power telescoping boom sections must be extended equally at all times.
- Handling of personnel from the boom is not authorized except with equipment furnished and installed by Grove Manufacturing Company.
- Keep load handling devices a minimum of 12 inches (30 cm) below boom head when lowering or extending boom.
- Loaded boom angles give an approximation of the operating radius at specified boom lengths. The boom angle before loading should be greater to account for deflection.
- Capacities appearing above bold line are based on structural strength and tipping should not be relied upon as a capacity limitation.
- Capacities for 28 ft. (8.6m) boom length shall be lifted with the boom fully retracted. If boom is not fully retracted, capacities shall not exceed those shown for the 34 ft. (10.4m) boom length.

#### DEFINITIONS:

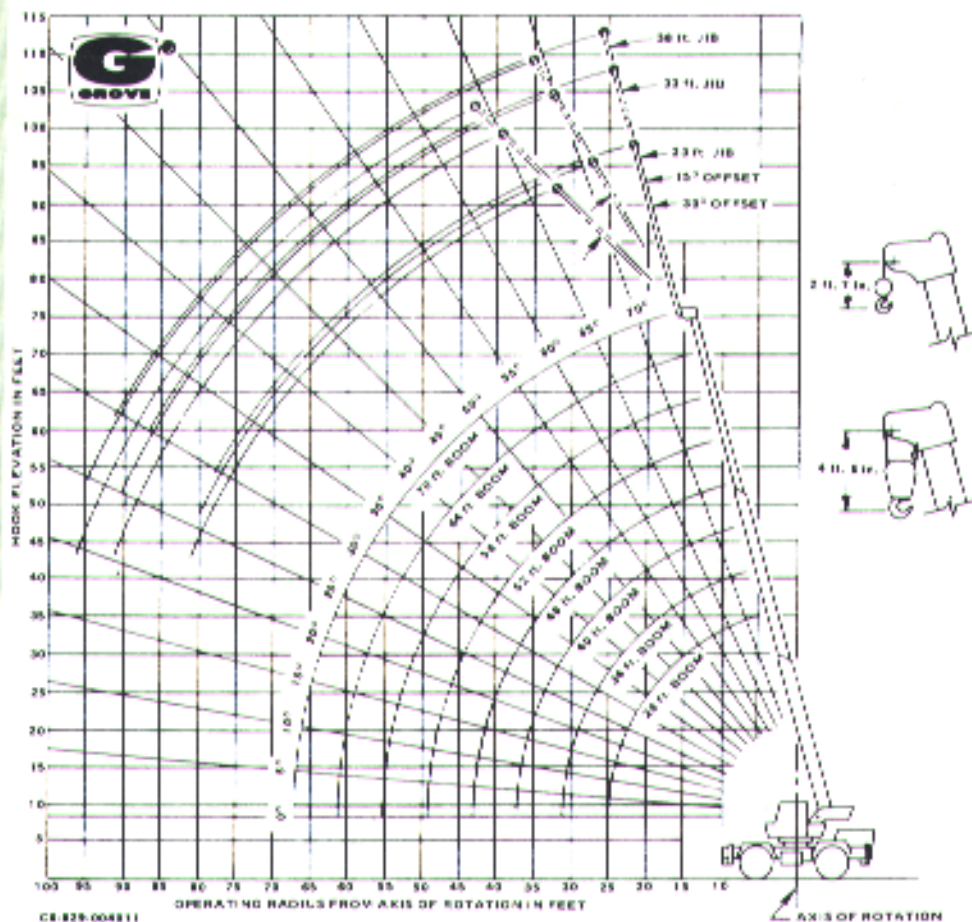
- Operating Radius: Horizontal distance from a projection of the axis of rotation to the supporting surface before loading to the center of the vertical hoist line or tackle with load applied.
- Loaded Boom Angle (Shown in Parenthesis on Main Boom Capacity Chart): is the angle between the boom base section and the horizontal, after lifting the rated load at the rated radius.
- Working Area: Areas measured in a circular arc about the center line of rotation as shown on the working area diagram.
- Freely Suspended Load: Load hanging free with no direct external force applied except by the lift cable.
- Side Load: Horizontal force applied to the lifted load either on the ground or in the air.



# GROVE®

# RT525

## RANGE DIAGRAM



### WEIGHT REDUCTIONS FOR LOAD HANDLING DEVICES

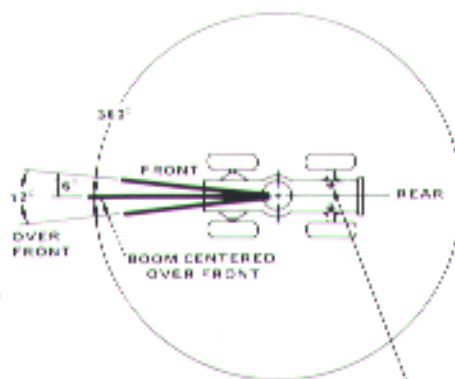
23 ft. JIB  
with 28-70 ft. BOOM  
\* Stowed - 381 lbs.  
\* Erected - 1,950 lbs.

23-38 ft. TELE. JIB  
with 28-70 ft. BOOM  
\* Stowed - 604 lbs.  
\* Erected (Retracted) - 3,659 lbs.  
\* Erected (Extended) - 4,583 lbs.  
\* Reduction of main boom capacities.

HOOKBLOCKS	
25 Ton, 4 Sheave	590 lbs.
15 Ton, 2 Sheave	300 lbs.
12 Ton, 1 Sheave (15 7/8" OD)	400 lbs.
12 Ton, 1 Sheave (12 1/8" OD)	285 lbs.
Auxiliary Boom Head	100 lbs.
5 Ton Headache Ball	172 lbs.

NOTE: All Load Handling Devices and Boom Attachments are Considered Part of the Load and Suitable Allowances MUST BE MADE for Their Combined Weights. Weights are for Grove furnished equipment.

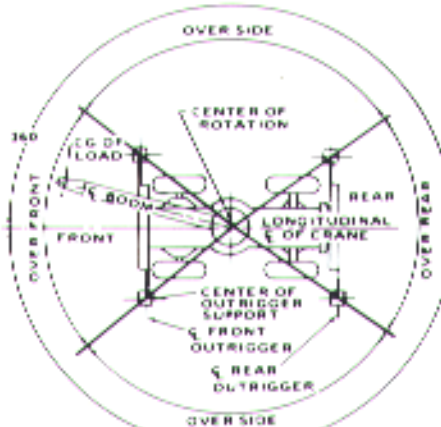
### LIFTING AREA DIAGRAMS



REAR AXLE OSCILLATION LOCKOUTS MUST BE SET TO MAINTAIN 360° CAPACITIES.

NOTE: BOLD LINES DETERMINE THE LIMITING POSITION OF ANY LOAD FOR OPERATION WITHIN ANY WORKING AREAS INDICATED.

CG-829-203529



NOTE: BOLD LINES DETERMINE THE LIMITING POSITION OF ANY LOAD FOR OPERATION WITHIN WORKING AREAS INDICATED.

NOTE: OVER SIDE CAPACITIES CAN BE LIFTED IN THE OVER REAR AREA.

CG-829-001159



**GROVE MANUFACTURING COMPANY**

Division of Kidde, Inc.

**KIDDE**

Box 21, Shady Grove, Pennsylvania 17256

Phone: (717) 597-8121 Telex: 842308 Cable: GROVE MFG

Distributed by: