

# All-Terrain Quality Improvements



# Product quality improvement

Dear customer,

At Manitowoc we work to constantly improve the quality of our cranes and to deliver high-quality and reliable products to our customers.

Our goal is to implement new quality improvements as well as stringently adhering to our already existing quality standards.

Through the analysis of our customer surveys, we can continuously achieve new quality improvements and optimize the quality of our products.

We welcome any feedback that you have that will help us continue to improve our products even further!



# Table of contents

## Topic

## Crane model

▶ Spotlights	All GMK
▶ Fuel-filling	GMK5115, GMK5135, GMK5165-2
▶ Cannon plugs	All GMK
▶ Display	All GMK
▶ Hook block stowage rope	All GMK
▶ Boom nose reeving	GMK6300L
▶ Counterweight platform	GMK4100B
▶ Protected hydraulic tubes	All GMK
▶ Grab handle – upper cab	All GMK
▶ Auxiliary hoist	GMK6400
▶ Heat protection of steering cylinders	GMK5225, GMK5275
▶ Air conditioner filling	All GMK
▶ Wax protection	All GMK
▶ Steering	GMK5225, GMK5275

# Table of contents

<b>Topic</b>	<b>Crane model</b>
▶ Proximity switch protection	GMK4100B
▶ Rear view camera	GMK6300L, GMK6400
▶ Rotating LED warning light	All GMK
▶ Hose drum frame	GMK6300L
▶ Striping	All GMK
▶ Slewing ladder	All GMK
▶ Rope guide	GMK6300L, GMK6400
▶ Mirror extensions	GMK with a Mercedes cab
▶ Striping for outriggers	All GMK
▶ Outrigger pads	GMK4100B, GMK4115, GMK4115L
▶ Cases for documents and keys	All GMK
▶ Split hook block	All GMK
▶ Door lock	GMK6300L, GMK6400

# Table of contents

## Topic

- ▶ Valve blocks
- ▶ Zinc-nickel fittings
- ▶ Scale
- ▶ Anemometer holder
- ▶ Additional corrosion protection for sea freight

## Crane model

All GMK

All GMK

All GMK

All GMK except GMK7550

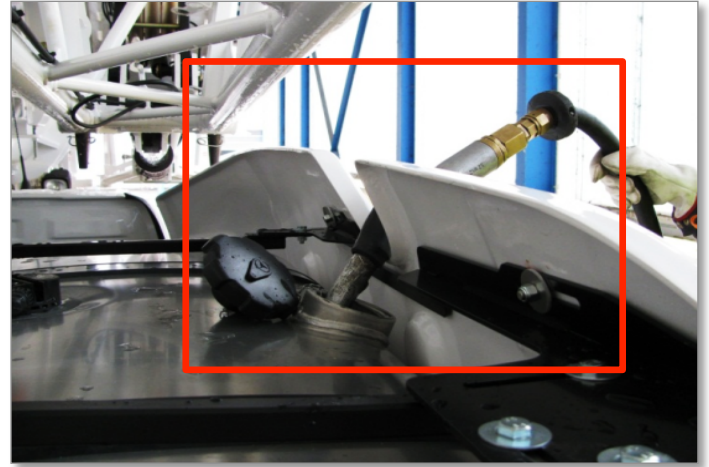
All GMK

## Spotlights



**> All GMK**  
The spotlights are now waterproof.

## Fuel-filling



- **GMK5115, GMK5135, GMK5165-2**  
Access to the fuel tank was difficult. A larger cutout facilitates easier fueling.

## Cannon plugs



**> All GMK**  
Usage of military plug housings.



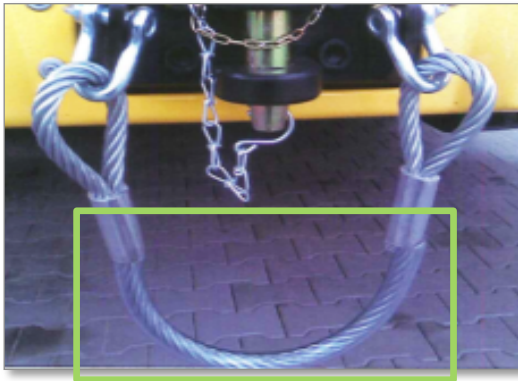
## Display



### > All GMK

The display buttons were improved and anti-fog coating was added to the display.

## Hook block stowage rope



*Old*

*New*

### > All GMK

Protective sleeve added to the hook block stowage rope to minimize hook block damage.

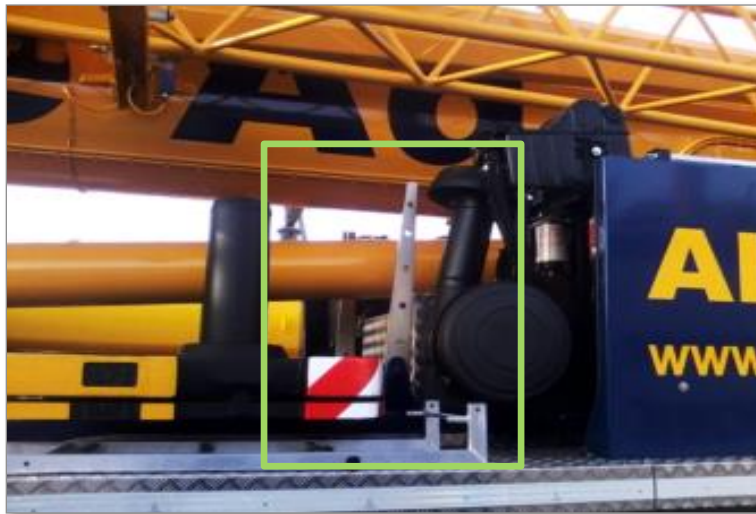
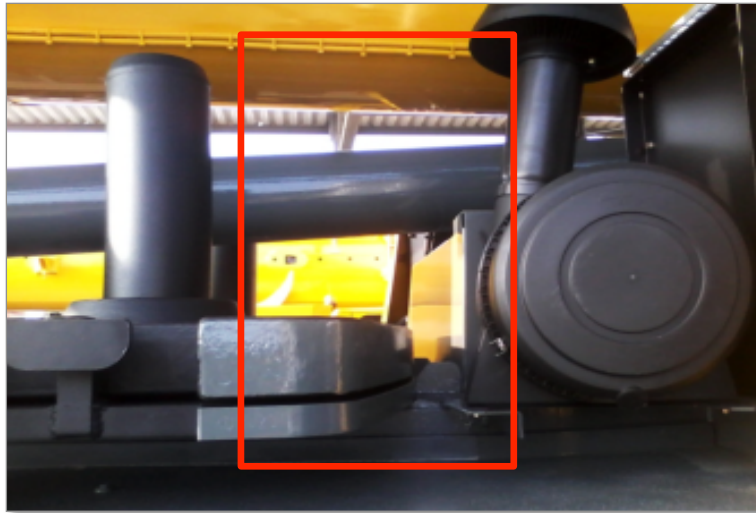
## Boom nose reeving



### > **GMK6300L**

There is an additional connection point for the rope, reducing the distance to connect the ropes (example with two-part reeving).

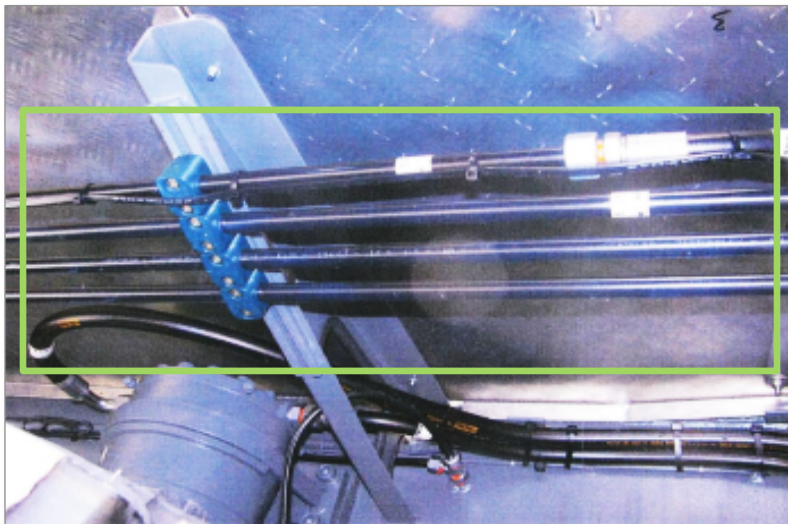
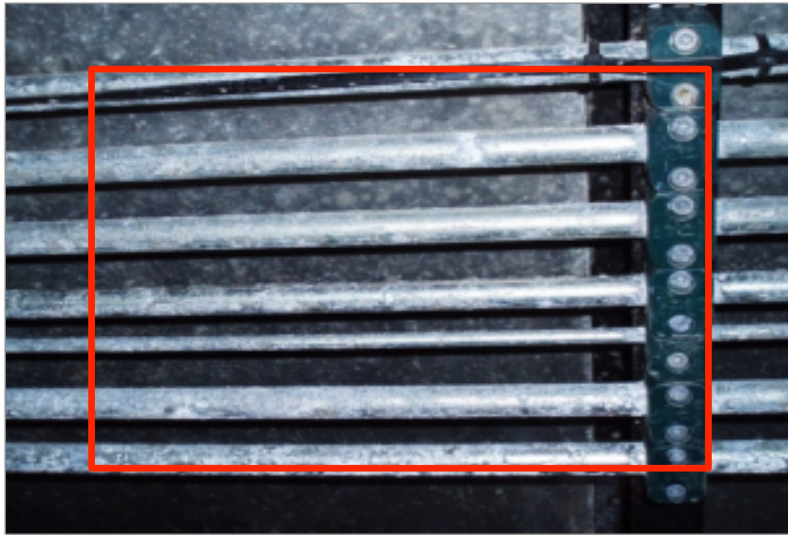
## Counterweight platform



### > **GMK4100B**

Through a longer counterweight centering post, the superstructure parts are better protected and the mounting of the counterweight is easier.

## Protected hydraulic tubes



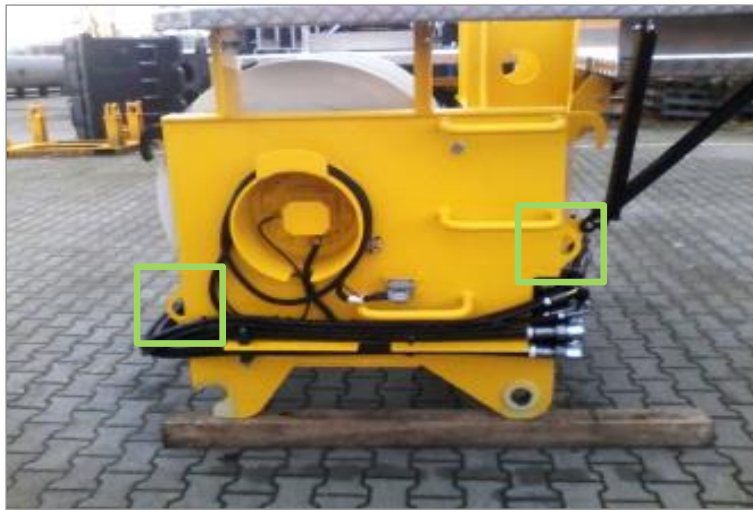
- > **All GMK**  
Better corrosion protection through the usage of plastic coated hydraulic tubes.

## Grab handle – upper cab



**> All GMK**  
New grab handle in the upper cab.

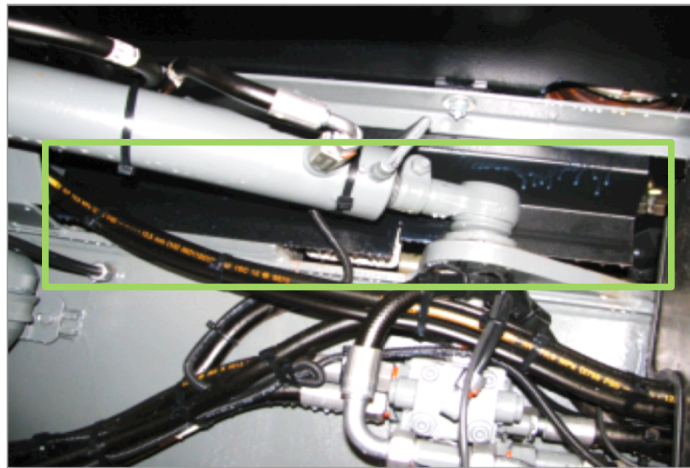
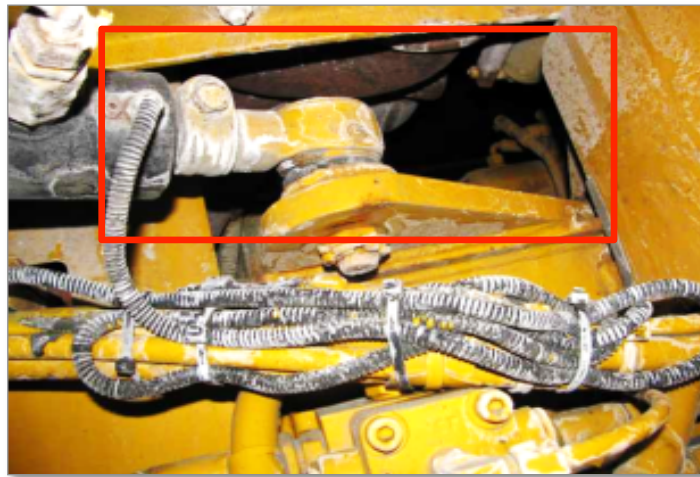
## Auxiliary hoist



### > **GMK6400**

Lashing eyes were mounted on the auxiliary hoist.

## Heat protection of steering cylinders



### > **GMK5225, GMK5275**

The heat protection of the steering cylinders was improved by implementing a heat protection plate.



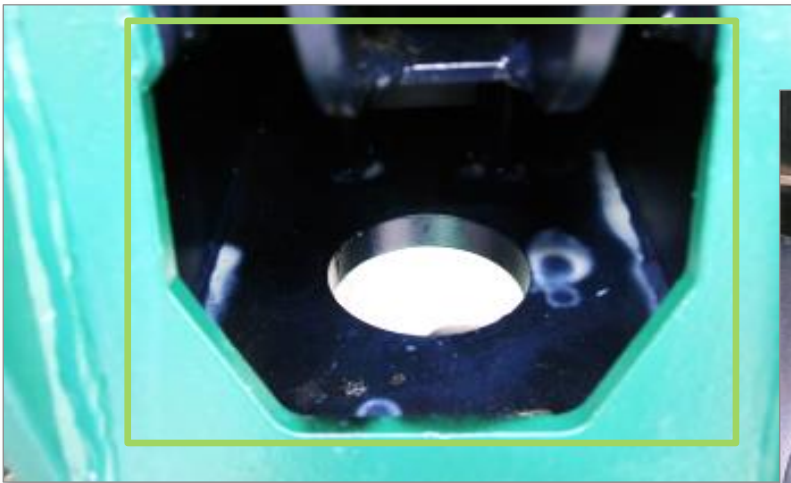
## Air conditioner filling



### > All GMK

Automated air conditioner refrigerant filling.

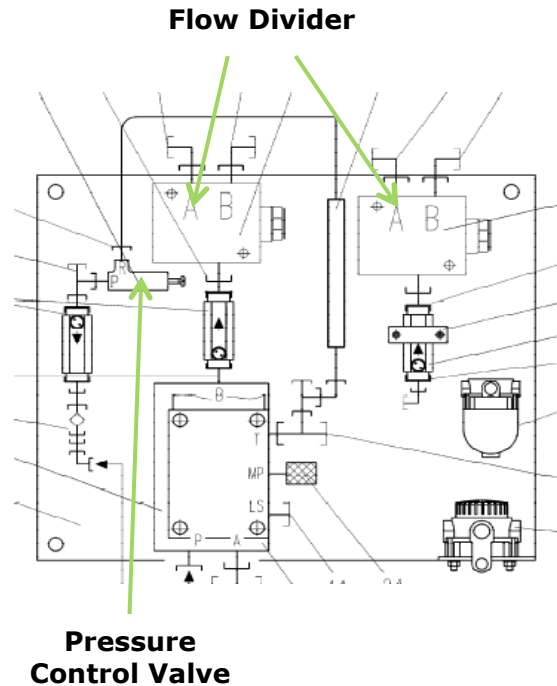
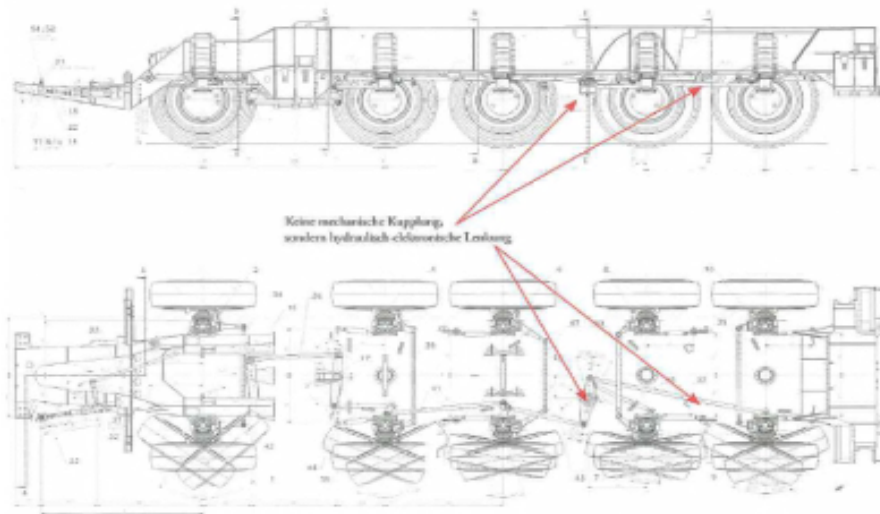
## Wax protection



### > All GMK

All cranes receive a protection wax treatment before delivery. It is a solvent free, water-dilutable product for corrosion protection.

## Steering



### > GMK5225, GMK5275

The steering was improved through changing the flow divider and the pressure control valve.

## Proximity switch protection



### Service Bulletin D11-026

PARTS REQUIRED  
protection plate  
socket head screw  
M8 x 40  
hexagon nut

#### > **GMK4100B**

The proximity switches could easily be damaged while mounting. The switches are now better protected by a plastic cover.

## Rear view camera



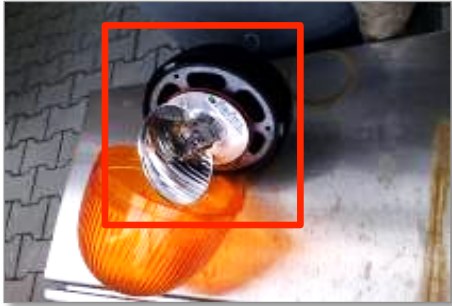
Version 1.03.00



### > GMK6300L, GMK6400

A software improvement was implemented to switch between work mode and rear view camera.

## Rotating warning light LED



### > All GMK

High power consuming beacon light was replaced by a new LED light with high efficiency and long life.

## Hose drum frame

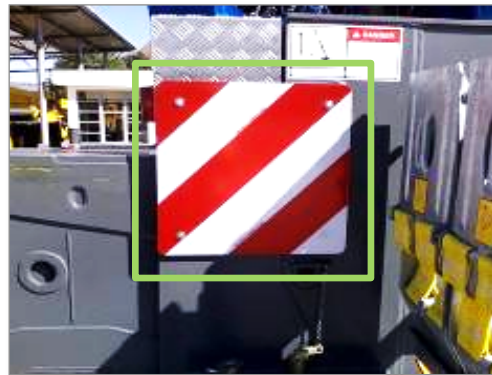


Frame  
Hydraulic drum

### > GMK6300L

New fixture developed to eliminate hose reel handling damage.

## Striping



**> All GMK**  
Relocated striping decals for improved visibility.



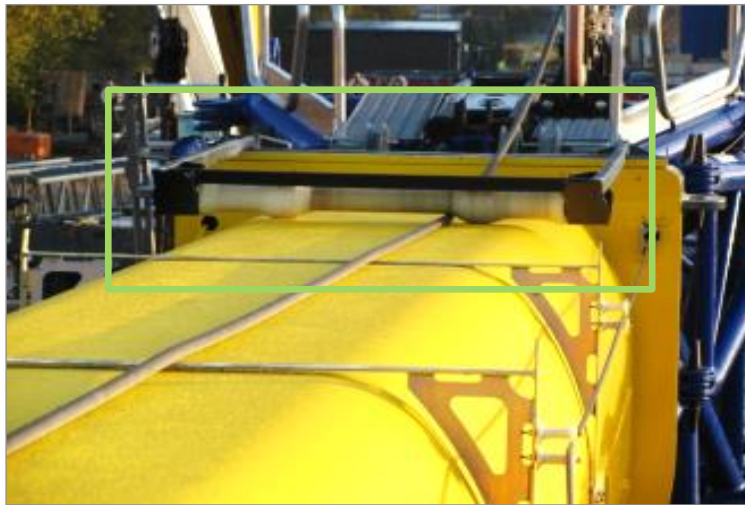
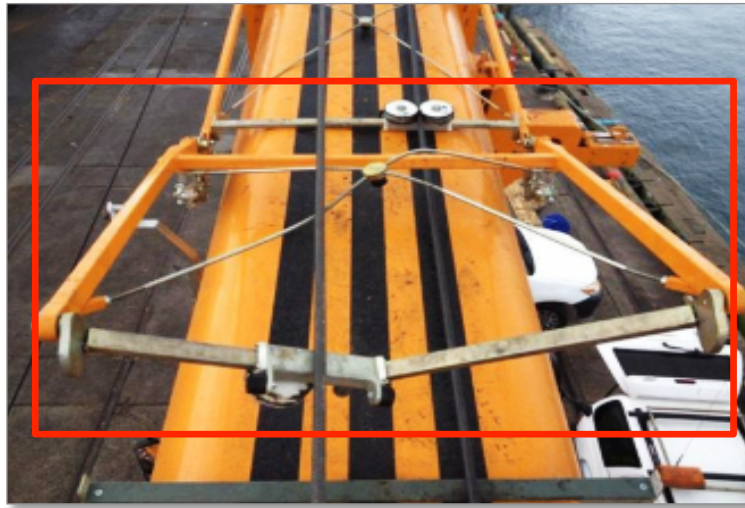
## Slewing ladder



### All GMK

New ladder design with an additional extendable step.

## Rope guide



**> GMK6300L, GMK6400**  
New rope guide.

## Mirror extensions



### **All GMK with a Mercedes cab**

The field of vision was improved by the new mirror extensions.

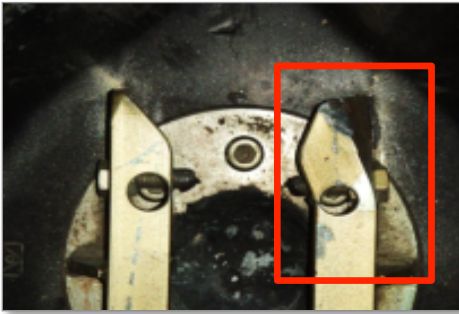
## Striping for outriggers



### All GMK

The quality of the striping decals for the outriggers was improved.

## Outrigger pads



### > **GMK4100B, GMK4115, GMK4115L**

The new outrigger pads freely pivot and the guide rail was improved. They are available in steel and plastic.

## Cases for documents and keys



- > **All GMK**  
Documents and keys are now stored in cases.

## Split hook block



### > All GMK

We now offer split hook blocks which increase the versatility of the block for different applications. It allows the operator to adjust the weight of the block to correspond with the appropriate parts of line.

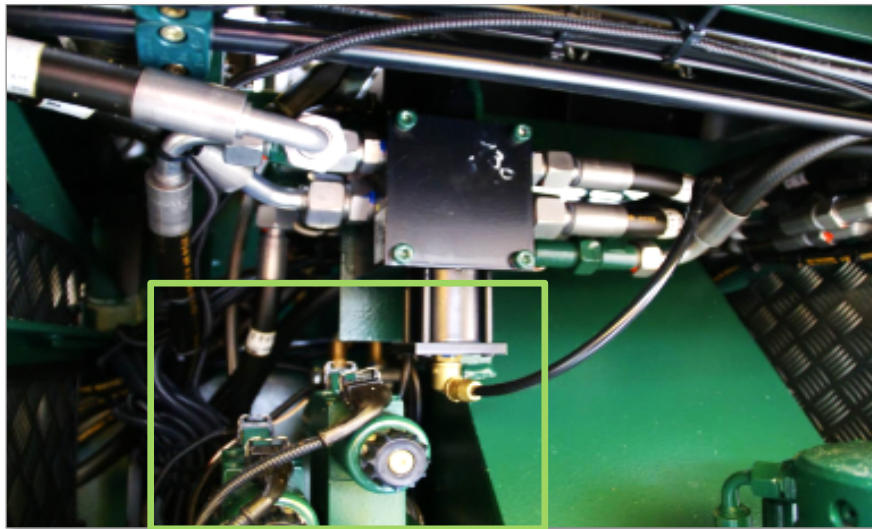
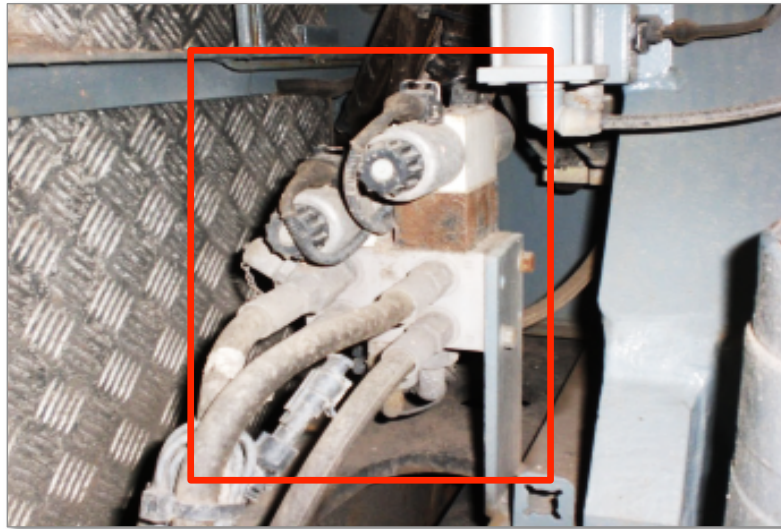
## Door lock



**> GMK6300L, GMK6400**  
Automotive style door locks and handles.

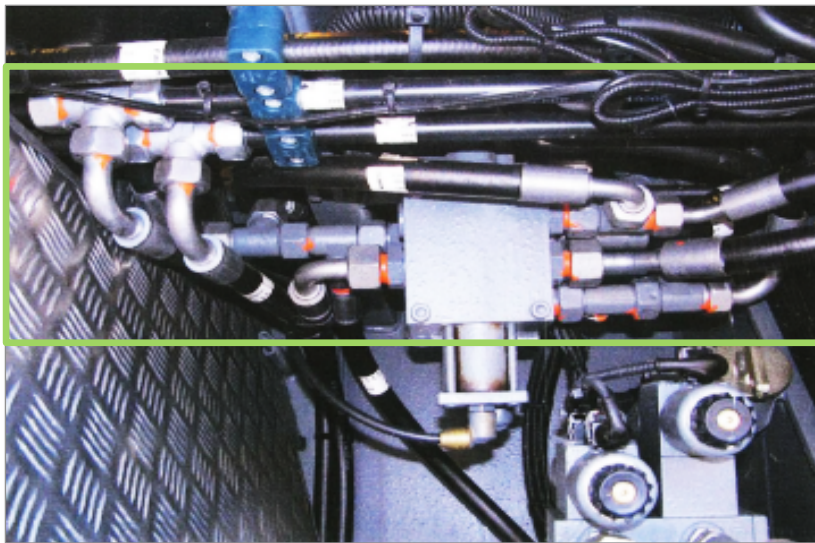
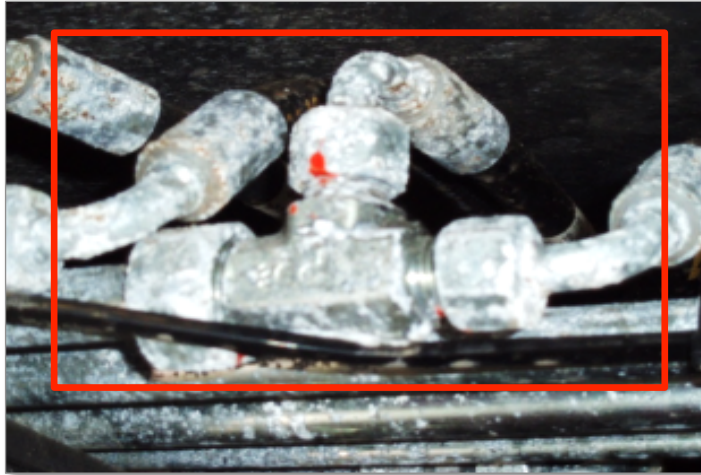


## Valve blocks



- **GMK6300L, GMK6400**  
Better corrosion protection through painted valve blocks.

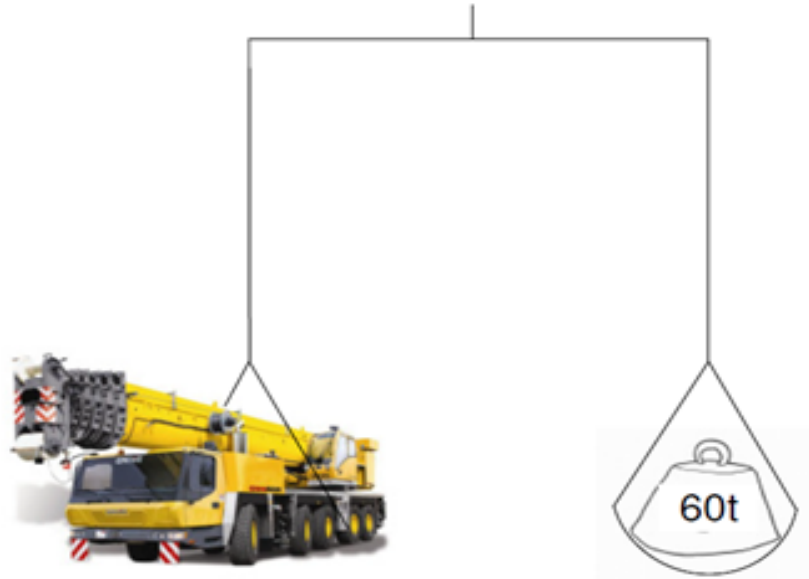
## Zinc-nickel fittings



### > All GMK

Better corrosion protection through the use of zinc-nickel fittings.

## Scale



### > All GMK

All GMKs are weighed prior to shipment on a new scale inside our factory. This ensures consistent weight results.

## Anemometer holder



Service Bulletin  
D13-013

### > All GMK except 7550

The anemometer holder is now placed in a space-saving storage box under the superstructure cabin, which protects the plugs and provides better protection against theft.

## Additional corrosion protection for sea freight



### > All GMK

Each GMK is coated with a corrosion protection liquid prior to arrival at the port. The yellowish protective coating protects the components from the harmful effects of overseas transport. Upon delivery, the coating can be removed by cleaning with warm water. Currently, this additional corrosion protection is standard on all cranes transferred from Bremerhaven. Additional ports will be added to this program in 2014.



## Notes



## Notes



We are only satisfied if you are!



[www.manitowoccranes.com](http://www.manitowoccranes.com)  
January 2014  
14-003