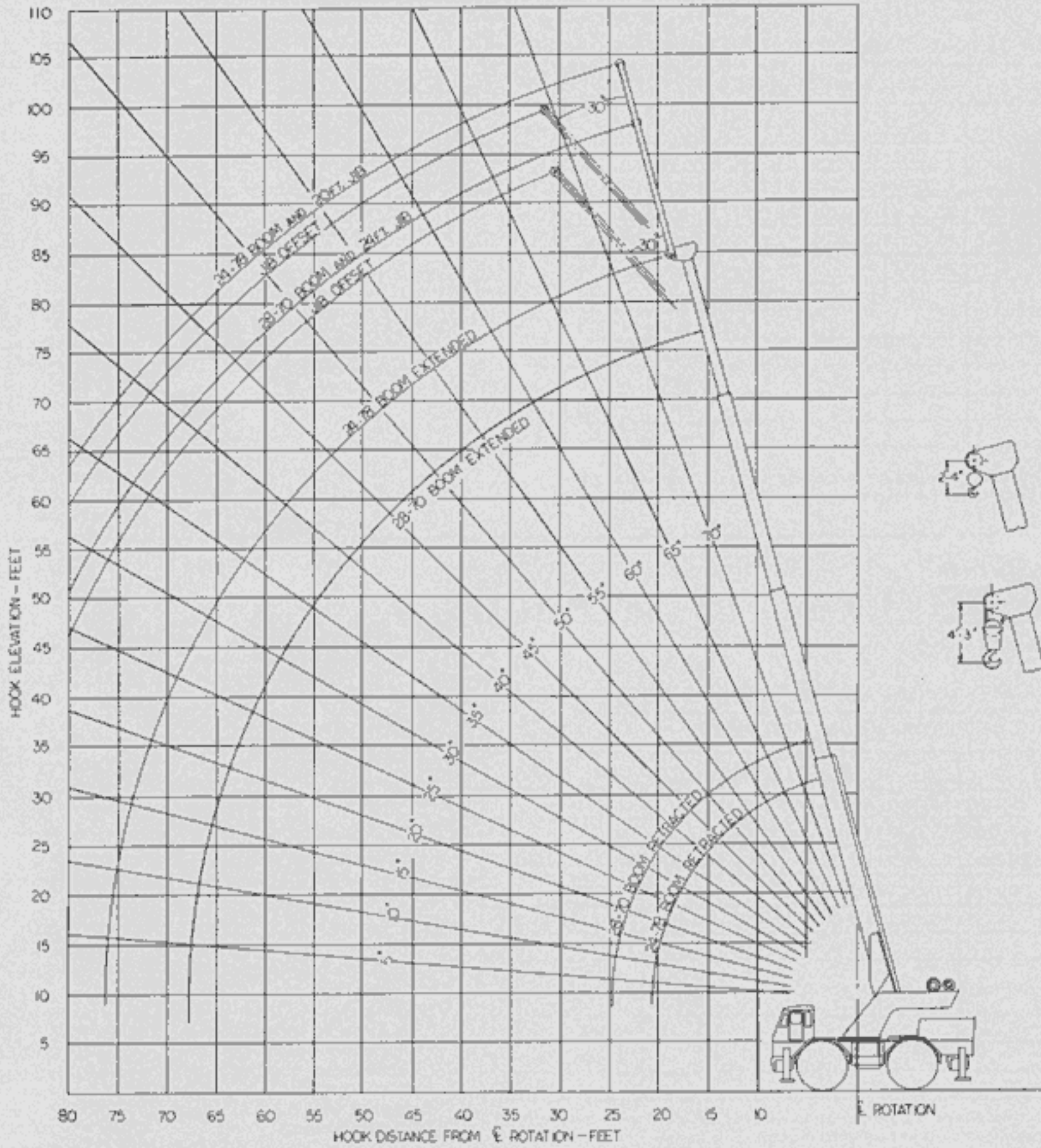




RT60

24' - 78' BOOM
AND
28' - 70' BOOM

HOOK ELEVATION CHART



20' JIB CAPACITIES

| MIN. BOOM ANGLE | NO OFFSET | MAX. (30°) OFFSET |
|-----------------|------------|-------------------|
| 75° | 6,200 lbs. | 2,600 lbs. |
| 70° | 5,000 | 2,400 |
| 65° | 4,300 | 2,300 |
| 60° | 3,700 | 2,150 |
| 55° | 3,300 | 2,100 |
| 50° | 2,600 | 1,650 |
| 45° | 2,400 | 1,500 |
| 40° | 2,200 | 1,460 |
| 30° | 1,900 | 1,200 |

Jibs are to be used for:
Single Line Operations Only.

All jib capacities are based on structural strength of the jib or main boom. Actual loads must not exceed capacities given in the main boom capacity chart for the same working radius less the allowance for jib weight.

24' JIB CAPACITIES

| MIN. BOOM ANGLE | NO OFFSET | MAX. (26°) OFFSET |
|-----------------|------------|-------------------|
| 75° | 6,000 lbs. | 2,700 lbs. |
| 70° | 4,750 | 2,550 |
| 65° | 4,000 | 2,375 |
| 60° | 3,500 | 2,300 |
| 55° | 3,150 | 2,200 |
| 50° | 2,900 | 2,170 |
| 45° | 2,650 | 2,125 |
| 40° | 2,550 | 2,085 |
| 30° | 2,400 | 2,000 |
| 26° | 2,300 | 1,950 |



RT 60 28'-70' BOOM

RATED LIFTING CAPACITIES ON OUTRIGGERS - 360°

| RADIUS IN FEET | BOOM LENGTH IN FEET | | | | | | | |
|----------------------|---------------------|--------|--------|--------|--------|--------|--------|--------|
| | 28 | 34 | 40 | 46 | 52 | 58 | 64 | 70 |
| 10 | 36,000 | 34,000 | 31,900 | 29,800 | | | | |
| 12 | 32,000 | 31,000 | 30,000 | 29,800 | 27,800 | | | |
| 15 | 27,500 | 27,500 | 27,500 | 27,500 | 27,000 | 25,750 | 23,700 | |
| 20 | 21,250 | 21,250 | 21,000 | 21,000 | 20,750 | 20,500 | 20,400 | 20,250 |
| 25 | | 15,500 | 15,500 | 15,500 | 15,500 | 15,500 | 15,000 | 15,000 |
| 30 | | | 11,700 | 11,700 | 11,700 | 11,700 | 11,700 | 11,700 |
| 35 | | | | 8,650 | 8,650 | 8,650 | 8,650 | 8,650 |
| 40 | | | | 6,650 | 6,650 | 6,650 | 6,650 | 6,650 |
| 45 | | | | | 5,250 | 5,250 | 5,250 | 5,250 |
| 50 | | | | | | 4,250 | 4,250 | 4,250 |
| 55 | | | | | | | 3,460 | 3,460 |
| 60 | | | | | | | 2,760 | 2,760 |
| 65 | | | | | | | | 2,180 |
| 66.5 | | | | | | | | 1,970 |

Capacities above the bold line are based on machinery strength and tipping should not be relied upon as a capacity limitation.

A6-829-000196

RATED LIFTING CAPACITIES ON RUBBER

| RADIUS IN FEET | OVER FRONT | OVER SIDE |
|-------------------|---------------|--------------|
| 10 | 30,000 | 19,500 |
| 12 | 24,500 | 14,800 |
| 15 | 16,600 | 9,800 |
| 20 | 10,300 | 5,450 |
| 25 | 6,650 | 3,660 |
| 30 | 4,850 | 2,300 |
| 35 | 3,380 | 1,330 |
| 40 | 2,680 | 470 |
| 45 | 1,525 | |
| 50 | 950 | |
| 55 | 635 | |

A6-829-000197

NOTES:

- Chart based on 16.00 x 24 tires and 80 PSI inflation pressure. Loads must be reduced for lower inflation pressures.

| RADIUS IN FEET | OVER FRONT | OVER SIDE |
|-------------------|---------------|--------------|
| 10 | 18,000 | 18,000 |
| 12 | 18,000 | 14,800 |
| 15 | 16,600 | 9,800 |
| 20 | 10,300 | 5,450 |
| 25 | 6,650 | 3,660 |
| 30 | 4,850 | 2,300 |
| 35 | 3,380 | 1,330 |
| 40 | 2,680 | 470 |
| 45 | 1,525 | |
| 50 | 950 | |
| 55 | 635 | |

A6-829-000296

NOTES:

- Chart based on 17.5 x 25 tires and 80 PSI inflation pressure. Loads must be reduced for lower inflation pressures.
- Capacities above bold line are based on machinery strength and tipping should not be relied upon as a capacity limitation.



RT 60 24'-78' BOOM

RATED LIFTING CAPACITIES ON OUTRIGGERS - 360°

| RADIUS IN FEET | MANUAL FLY SECTION RETRACTED | | | | | | | Manual Fly Extended |
|----------------------|------------------------------|--------|--------|--------|--------|--------|--------|---------------------------|
| | BOOM LENGTH IN FEET | | | | | | | |
| | 24 | 30 | 36 | 42 | 48 | 54 | 60 | *78 |
| 10 | 36,000 | 34,500 | 32,700 | 30,800 | | | | |
| 12 | 32,000 | 32,000 | 31,000 | 29,900 | 28,000 | | | |
| 15 | 26,000 | 26,000 | 26,000 | 25,500 | 24,000 | 22,000 | 20,000 | |
| 20 | 20,000 | 20,000 | 20,000 | 20,000 | 20,000 | 19,000 | 17,500 | |
| 25 | | 13,000 | 13,000 | 13,000 | 13,000 | 13,000 | 13,000 | 13,000 |
| 30 | | | 10,800 | 10,800 | 10,800 | 10,800 | 10,800 | 10,800 |
| 35 | | | | 8,200 | 8,200 | 8,200 | 8,200 | 8,200 |
| 40 | | | | | 6,100 | 6,100 | 6,100 | 6,400 |
| 45 | | | | | | 4,300 | 4,300 | 4,500 |
| 50 | | | | | | 2,800 | 2,800 | 3,200 |
| 55 | | | | | | | 1,600 | 2,500 |
| 60 | | | | | | | | 2,200 |
| 65 | | | | | | | | 1,600 |
| 70 | | | | | | | | 1,300 |
| 74.8 | | | | | | | | 1,175 |

Capacities above the bold line are based on machinery strength and tipping should not be relied upon as a capacity limitation.

*ALSO INDICATES MAXIMUM CAPACITY OF EXTENDED FLY SECTION, REGARDLESS OF BOOM LENGTH.

A6-829-000200

RATED LIFTING CAPACITIES ON RUBBER

| RADIUS IN FEET | OVER FRONT | OVER SIDE |
|-------------------|---------------|--------------|
| 10 | 30,000 | 18,000 |
| 12 | 24,500 | 13,500 |
| 15 | 16,500 | 8,000 |
| 20 | 9,500 | 4,500 |
| 25 | 6,400 | 2,900 |
| 30 | 4,250 | 1,200 |
| 35 | 2,675 | 600 |
| 40 | 1,500 | 350 |
| 45 | 950 | |
| 50 | 560 | |

A6-829-000201

NOTES:

- Chart based on 16.00 x 24 tires and 80 PSI inflation pressure. Loads must be reduced for lower inflation pressures.

| RADIUS IN FEET | OVER FRONT | OVER SIDE |
|-------------------|---------------|--------------|
| 10 | 18,000 | 18,000 |
| 12 | 18,000 | 13,500 |
| 15 | 16,500 | 8,000 |
| 20 | 9,500 | 4,500 |
| 25 | 6,400 | 2,900 |
| 30 | 4,250 | 1,200 |
| 35 | 2,675 | 600 |
| 40 | 1,500 | 350 |
| 45 | 950 | |
| 50 | 560 | |

A6-829-000297

NOTES:

- Chart based on 17.5 x 25 tires and 80 PSI inflation pressure. Loads must be reduced for lower inflation pressures.
- Capacities above bold line are based on machinery strength and tipping should not be relied upon as a capacity limitation.

ABOVE CAPACITIES WITH MANUAL FLY SECTION RETRACTED.

IMPORTANT - Refer to the general NOTES TO LIFTING CAPACITIES (page 3)



RT 60 21'-51' BOOM

RATED LIFTING CAPACITIES ON RUBBER

| RADIUS IN FEET | OVER FRONT | OVER SIDE |
|----------------|------------|-----------|
| 10 | 30,000 | 19,500 |
| 12 | 24,600 | 14,800 |
| 15 | 17,500 | 10,600 |
| 17 | 16,000 | 9,000 |
| 20 | 11,800 | 7,100 |
| 25 | 7,600 | 5,000 |
| 30 | 5,800 | 3,100 |
| 35 | 4,400 | 2,100 |
| 40 | 3,300 | 1,200 |
| 45 | 2,600 | 800 |
| 47 | 2,300 | |

| RADIUS IN FEET | OVER FRONT | OVER SIDE |
|----------------|------------|-----------|
| 10 | *18,000 | *18,000 |
| 12 | *18,000 | 14,800 |
| 15 | **17,500 | 10,600 |
| 17 | 16,000 | 9,000 |
| 20 | 11,800 | 7,100 |
| 25 | 7,600 | 5,000 |
| 30 | 5,800 | 3,100 |
| 35 | 4,400 | 2,100 |
| 40 | 3,300 | 1,200 |
| 45 | 2,600 | 800 |
| 47 | 2,300 | |

RATED LIFTING CAPACITIES ON OUTRIGGERS - 360°

| RADIUS IN FEET | BOOM LENGTH IN FEET | | | | | |
|----------------|---------------------|--------|--------|--------|--------|--------|
| | 21 | 27 | 33 | 39 | 45 | 51 |
| 10 | 36,000 | 33,000 | 32,000 | 31,000 | 30,000 | |
| 12 | 32,000 | 32,000 | 31,000 | 30,000 | 28,000 | |
| 15 | 26,000 | 26,000 | 26,000 | 26,000 | 25,000 | 23,000 |
| 17 | 23,000 | 23,000 | 23,000 | 23,000 | 22,000 | 21,500 |
| 20 | | 20,000 | 20,000 | 20,000 | 20,000 | 20,000 |
| 25 | | | 15,000 | 15,000 | 15,000 | 15,000 |
| 30 | | | | 11,600 | 11,600 | 11,600 |
| 35 | | | | 9,100 | 9,100 | 9,100 |
| 40 | | | | | 6,800 | 6,800 |
| 45 | | | | | | 5,800 |
| 47 | | | | | | 5,000 |

Capacities above the bold line are based on machinery strength and tipping should not be relied upon as a capacity limitation.
A6-829-000277

A6-829-000276

NOTES:

- Chart based on 16.00 x 24 tires and 80 PSI inflation pressure. Loads must be reduced for lower inflation pressures.

A6-829-000294

NOTES:

- Chart based on 17.5 x 25 tires and 80 PSI inflation pressure. Loads must be reduced for lower inflation pressures.
- *For 18,000 lb. lifting capacity, maximum boom length is 42'.
- **For 17,500 lb. lifting capacity, maximum boom length is 48'.
- Capacities above bold line are based on machinery strength and tipping should not be relied upon as a capacity limitation.



RT 60 24'-60' BOOM

RATED LIFTING CAPACITIES ON RUBBER

RATED LIFTING CAPACITIES ON OUTRIGGERS - 360°

| RADIUS IN FEET | BOOM LENGTH IN FEET | | | | | | |
|----------------|---------------------|--------|--------|--------|--------|--------|--------|
| | 24 | 30 | 36 | 42 | 48 | 54 | 60 |
| 10 | 36,000 | 34,500 | 32,700 | 30,800 | | | |
| 12 | 32,000 | 32,000 | 31,000 | 30,000 | 28,000 | | |
| 15 | 26,000 | 26,000 | 26,000 | 26,000 | 24,000 | 22,000 | 20,000 |
| 20 | 20,000 | 20,000 | 20,000 | 20,000 | 20,000 | 19,000 | 17,500 |
| 25 | | 15,000 | 15,000 | 15,000 | 15,000 | 15,000 | 15,000 |
| 30 | | | 11,800 | 11,800 | 11,800 | 11,800 | 11,800 |
| 35 | | | | 9,100 | 9,100 | 9,100 | 9,100 |
| 40 | | | | | 7,100 | 7,100 | 7,100 |
| 45 | | | | | | 5,300 | 5,300 |
| 50 | | | | | | 4,100 | 4,100 |
| 55 | | | | | | | 3,650 |

Capacities above the bold line are based on machinery strength and tipping should not be relied upon as a capacity limitation.
A6-829-000192

| RADIUS IN FEET | OVER FRONT | OVER SIDE |
|----------------|------------|-----------|
| 10 | *30,000 | 19,500 |
| 12 | 24,600 | 14,800 |
| 15 | 16,500 | 9,800 |
| 20 | 11,200 | 6,350 |
| 25 | 7,200 | 3,860 |
| 30 | 5,250 | 2,680 |
| 35 | 3,660 | 1,650 |
| 40 | 2,780 | 550 |
| 45 | 2,100 | |
| 50 | 1,420 | |
| 55 | 940 | |

A6-829-000193

NOTES:

- *For 30,000 lb. lifting capacity, maximum boom length is 42'.
- Chart based on 16.00 x 24 tires and 80 PSI inflation pressure. Loads must be reduced for lower inflation pressures.

| RADIUS IN FEET | OVER FRONT | OVER SIDE |
|----------------|------------|-----------|
| 10 | *18,000 | *18,000 |
| 12 | *18,000 | 14,800 |
| 15 | 16,500 | 9,800 |
| 20 | 11,200 | 6,350 |
| 25 | 7,200 | 3,860 |
| 30 | 5,250 | 2,680 |
| 35 | 3,660 | 1,650 |
| 40 | 2,780 | 550 |
| 45 | 2,100 | |
| 50 | 1,420 | |
| 55 | 940 | |

A6-829-000295

NOTES:

- For 18,000 lb. lifting capacity, maximum boom length is 42'.
- Chart based on 17.5 x 25 tires and 80 PSI inflation pressure. Loads must be reduced for lower inflation pressures.

N
O
T
E
S

- Rated lifting capacities, with or without outriggers, are the maximum loads covered by the manufacturer's warranty with the machine standing on a firm, level and uniform supporting surface. Capacities do not exceed 85% of tipping loads. Practical working loads for the particular job shall be established by the user with due allowance for operating conditions. These conditions include the supporting ground and other factors affecting stability, wind, hazardous surroundings, experience of personnel, etc.
- For certain conditions, capacities are controlled by machinery strength. In these cases, machine tipping must not be relied upon as the capacity limitation.
- For clamshell and concrete bucket operation, weight of bucket and load should not exceed 90% of published lifting capacity.
- The weights of all load handling devices, (hook, blocks, ball, jib masts, rooster sheave, etc.) are considered a part of the load lifted, and suitable allowances for them should be made.
- Boom jib extensions may be used as straight, gooseneck extensions, and for lifting crane service only.
- With jib installed, lifting capacities over main boom must be reduced as follows: 17' jib, 1190 lbs. reduction; 20' jib, 1400 lbs. reduction; 24' jib, 1700 lbs. reduction.
- With outriggers set, maximum boom length (all booms) - including jib extended - may be raised from horizontal 360°.
- Long cantilever booms can create a tipping condition when in extended and lowered positions. Boom should be retracted proportionate to the capacity of the load chart.
- Each power-telescoping boom section should be extended equally at all times. Do not operate one fully extended and another fully retracted.
- Jibs to be used only with single part line. Multi-part rigging is not permissible.
- The maximum load which may be telescoped is limited by hydraulic pressure, boom angle, and boom lubrication. It is safe to attempt to telescope any load within the limits of the load chart.