

GROVE®

FULL HYDRAULIC SELF-PROPELLED CRANE

RT59S 15 TON CAP.

RATED LIFTING CAPACITIES

ON OUTRIGGERS FULLY EXTENDED — 360°

ON RUBBER

24 ft. - 60 ft. BOOM

Radius in Feet	Boom Length in Feet						
	24	30	36	42	48	54	60
12	*30,000	30,000	30,000	30,000	28,000		
15	26,000	26,000	26,000	26,000	24,000		
20	20,000	20,000	20,000	20,000	20,000	22,000	20,000
25		15,000	15,000	15,000	15,000	15,000	15,000
30			11,800	11,800	11,800	11,800	11,800
35				9,100	9,100	9,100	9,100
40					7,100	7,100	7,100
45						5,300	5,300
50						4,100	4,100
55							3,650

A6-829-000192

PCSA CLASS
(12-71)

Radius in Feet	Over Front	Over Side
10	*30,000	19,500
12	24,600	14,800
15	16,500	9,800
20	11,200	6,350
25	7,200	3,860
30	5,250	2,680
35	3,660	1,650
40	2,780	550
45	2,100	
50	1,420	
55	940	

A6-829-000193A

All On Rubber Capacities are based on 16:00 x 24 tires and 80 PSI inflation pressure. Loads must be reduced for lower inflation pressures.

* For 30,000 lb. lifting capacity, maximum boom length is 42 ft.

28 ft. - 70 ft. BOOM

Radius in Feet	Boom Length in Feet							
	28	34	40	46	52	58	64	70
12	30,000	30,000	30,000	29,800	27,800			
15	27,500	27,500	27,500	27,500	27,000	25,750	23,700	
20	21,250	21,250	21,000	21,000	20,750	20,500	20,400	20,250
25		15,500	15,500	15,500	15,500	15,500	15,000	15,000
30			11,700	11,700	11,700	11,700	11,700	11,700
35				8,650	8,650	8,650	8,650	8,650
40				6,650	6,650	6,650	6,650	6,650
45					5,250	5,250	5,250	5,250
50						4,250	4,250	4,250
55							3,460	3,460
60							2,760	2,760
65								2,180
66.5								1,970

A6-829-000196

PCSA CLASS
(12-67)

Radius in Feet	Over Front	Over Side
10	30,000 (a)	19,500 (b)
12	24,500 (b)	14,800 (c)
15	16,600 (c)	9,800 (d)
20	10,300 (e)	5,450 (e)
25	6,650	3,660
30	4,850	2,300
35	3,380	1,330
40	2,680	470
45	1,525	
50	950	
55	635	

A6-829-000197 Rev. 4

Maximum Permissible
Boom Length:
(a) 28 ft.
(b) 34 ft.
(c) 46 ft.
(d) 52 ft.
(e) 64 ft.

24 ft. - 78 ft. BOOM

Radius in Feet	Boom Length in Feet							
	24	30	36	42	48	54	60	** 78
12	30,000	30,000	30,000	29,900	28,000			
15	26,000	26,000	26,000	25,500	24,000			
20	20,000	20,000	20,000	20,000	20,000	19,000	17,500	
25		13,000	13,000	13,000	13,000	13,000	13,000	13,000
30			10,800	10,800	10,800	10,800	10,800	10,800
35				8,200	8,200	8,200	8,200	8,200
40					6,100	6,100	6,100	6,400
45						4,300	4,300	4,500
50						2,800	2,800	3,200
55							1,600	2,500
60								2,200
65								1,600
70								1,300
74.8								1,175

A6-829-000200A

PCSA CLASS
(12-61)

Radius in Feet	Over Front	Over Side
10	30,000 (a)	18,000 (c)
12	24,500 (b)	13,500 (d)
15	16,500 (d)	8,000
20	9,500	4,500
25	6,400	2,900
30	4,250	1,200
35	2,675	600
40	1,500	350
45	950	
50	560	

A6-829-000201B

Use of Manual Fly Section
Recommended on Rubber.

Maximum Permissible
Boom Length:
(a) 24 ft.
(b) 30 ft.
(c) 36 ft.
(d) 48 ft.

NOTE: Capacities do not exceed 85% of tipping loads. Do not exceed rated lifting capacities.

NOTES TO LIFTING CAPACITIES, SEE REVERSE SIDE

WEIGHT REDUCTIONS

20 ft. JIB WITH 24-60 ft. or 24-78 ft. BOOM	
STOWED	- 100 lbs.
ERECTED	- 1,020 lbs.

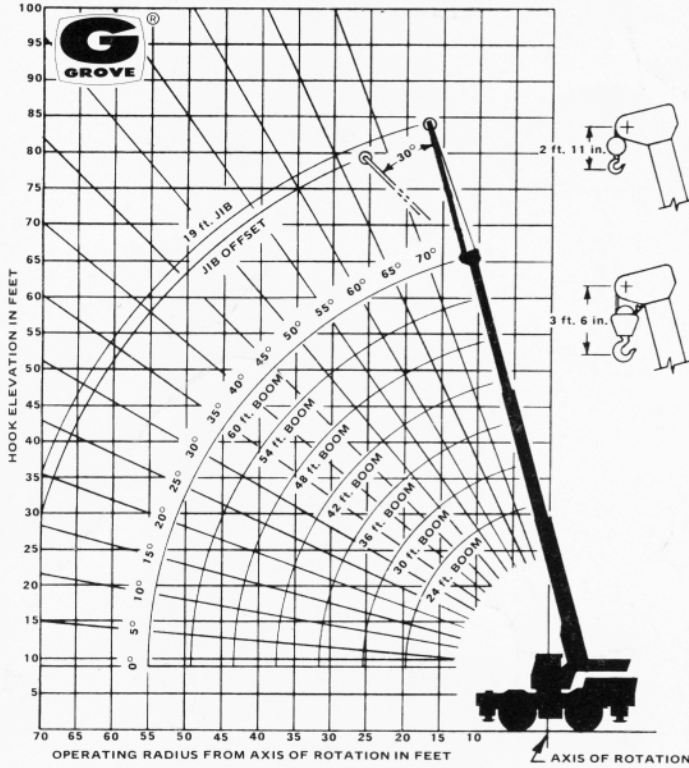
24 ft. JIB WITH 28 ft. - 70 ft. BOOM	
STOWED	- 360 lbs.
ERECTED	- 1,505 lbs.

HOOK BLOCKS	
8 Ton, 1 Sheave	180 lbs.
15 Ton, 3 Sheave	260 lbs.
Aux. Boom Head	105 lbs.
5 Ton Headache Ball	150 lbs.

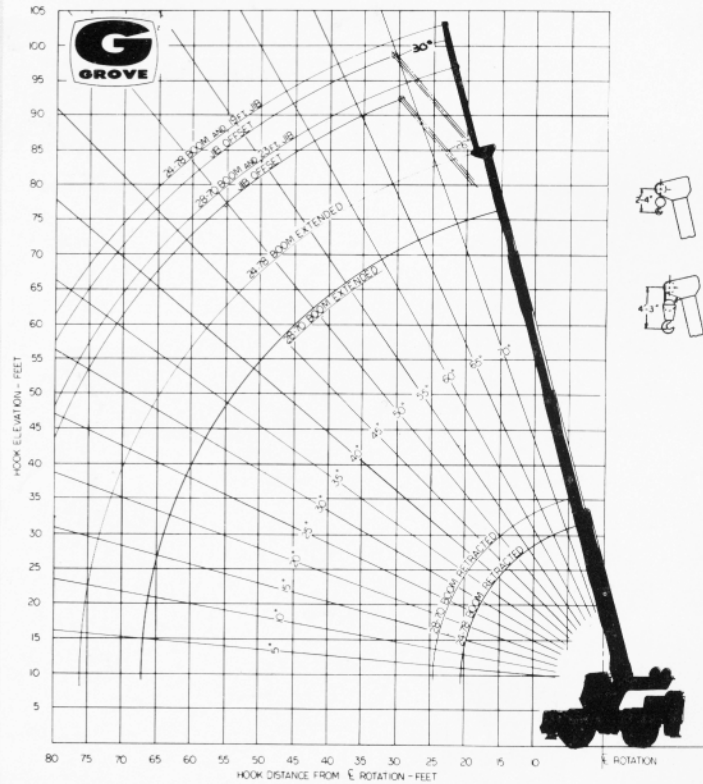
NOTE: All Load Handling Devices and Boom Attachments are Considered Part of the Load and Suitable Allowances MUST BE MADE for Their Combined Weights. Weights are for Grove furnished equipment.

Capacities appearing above bold line are based upon structural strength and machine stability should not be relied upon as the capacity limitation.
* Indicates maximum capacity of Extended Fly Section, regardless of boom length.

RANGE DIAGRAM 24 ft. - 60 ft. BOOM



RANGE DIAGRAM 28 ft. - 70 ft. and 24 ft. - 78 ft. BOOMS



JIB CAPACITIES

19 ft. JIB

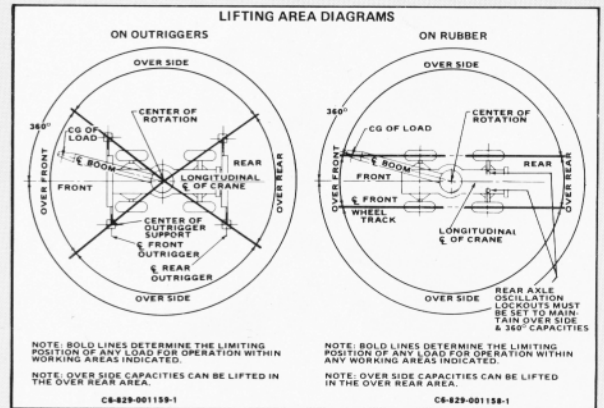
MIN. BOOM ANGLE	NO OFFSET	MAX. OFFSET (30°)
75	6200	2600
70	5000	2400
65	4300	2300
60	3700	2150
55	3300	2100
50	2600	1650
45	2400	1500
40	2200	1460
30	1900	1200

A6-829-000194B

23 ft. JIB

MIN. BOOM ANGLE	NO OFFSET	MAX. OFFSET (26°)
75	6400	3100
70	5150	2850
65	4350	2650
60	3700	2450
55	3300	2275
50	2950	2170
45	2650	2125
40	2550	2085
35	2475	2040
30	2400	2000
26	2300	1950

A6-829-000583C



NOTES TO LIFTING CAPACITIES

- Do not exceed any rated lifting capacity. Rated lifting capacities are based on freely suspended loads with the machine leveled and standing on a firm supporting surface. Ratings with outriggers are based on outriggers being extended to their maximum position and tires raised free of crane weight before extending the boom or lifting loads.
- Practical working loads for each particular job shall be established by the user depending on operating condition to include: the supporting surface, wind and other factors affecting stability, hazardous surroundings, experience of personnel, handling of load, etc. No attempt must be made to move a load horizontally on the ground in any direction.
- Operating radius is the horizontal distance from the axis of rotation before loading to the centerline of the vertical hoist line or tackle with loads applied.
- "On Rubber" lifting (if permitted) depends on proper tire inflation, capacity and condition. "On Rubber" loads may be transported at a maximum vehicle speed of 2.5 mi/hr (4 Km/hr) on a firm and level surface under conditions specified.
- Jibs may be used for single line lifting crane service only. Jib capacities are based on structural strength of jib or main boom. Jib loads must not exceed main boom lifting capacities for the actual operating radius.
- Operation is not intended or approved for any conditions outside of those shown hereon. Handling of personnel from the boom is not authorized except with equipment furnished and installed by Grove Manufacturing Company.
- For clamshell or concrete bucket operation, weight of bucket and load must not exceed 80% of rated lifting capacities.
- Power-telescoping boom sections must be extended equally at all times. cantilever booms can create a tipping condition when in extended and lowered position.
- The maximum load which may be telescoped is limited by hydraulic pressure, boom angle, boom lubrication, etc. It is safe to attempt to telescope any load within the limits of rated lifting capacity chart.
- With certain boom and hoist tackle combinations, maximum capacities may be obtainable with standard cable lengths.
- With certain boom and load combinations, raising of load with boom cylinders may not be possible. Operational safety is not affected by condition.
- Keep load handling devices a minimum of 12 inches (30 cm) below boom when lowering or extending boom.
- If actual boom length and/or radius is between values listed, use lifting capacity for the next longer rated length and/or radius.
- All load handling devices and boom attachments are considered part of the crane and suitable allowances must be made for their combined weights.
- Operation of this equipment in excess of rating charts or disregard of instructions is hazardous and voids the warranty and manufacturer's liability.



GROVE MANUFACTURING COMPANY
Division of Walter Kidde & Company, Inc.
KIDDE

Box 21 SHADY GROVE, PENNA. 17256

Distributed by: